



## Child Protection Policy.

Designated Lead Deputy Designated Lead	Lorna Harvey (Headteacher) Fay Younger (Nursery Lead)  Contacts: <a href="mailto:lorna.harvey@damecatherines.org">lorna.harvey@damecatherines.org</a> <a href="mailto:office@damecatherines.org">office@damecatherines.org</a>
Governance lead for Child Protection	Christina Oppenheimer

Headteacher signature	L Harvey
School Governance Signature (Chair of Management Team)	C. Oppenheimer
Date of latest review	September 2020
Regularity of review	Half yearly

## **1. Introduction and Context**

<b><u>1.1 Contents</u></b>	<b><u>Page</u></b>
<b>1. Introduction</b>	<b>4</b>
1.2 Vision and Ethos	
1.3 Our Responsibilities	
1.4 Our Principles	
<b>2. Types of Abuse</b>	<b>7</b>
<b>3. Signs of Abuse</b>	<b>10</b>
<b>4. Safeguarding Roles and Responsibilities</b>	<b>16</b>
<b>5. Safeguarding Processes and Procedures</b>	<b>24</b>
5.1 Early Help	
5.2 Referrals to Children's Social care	
5.3 Records	
5.4 Recruitment	
5.5 Dealing with allegations against staff	
5.6 Important Contact Details	
<b>6. Management of Policy</b>	<b>31</b>
 <b><u>Appendices</u></b>	
1. Learning from SCRs and SILRs	<b>32</b>
2. EYFS requirements	<b>35</b>
3. Incident / concern recording sheet	<b>43</b>
4. Managing Allegations against staff and volunteers	<b>46</b>
5. Body maps	<b>49</b>

6. Children in Specific Circumstances	<b>53</b>
7. Domestic Abuse, including Female Genital Mutilation (FGM), so called 'Honour Based Violence' (HBV) and Forced Marriage	<b>55</b>
8. Privately Fostered Children	<b>56</b>
9. Radicalisation and Extremism	<b>60</b>
10. 7 Golden Rules to Sharing Information	<b>61</b>

## 1. Introduction

### 1.2 Our school & its vision & ethos

Dame Catherine Harpur's School and Nursery offers a warm, welcoming, caring and secure environment in which everyone feels valued. We aim to provide high quality teaching and learning experiences for all pupils through a broad, challenging and exciting curriculum and we listen to children and parents and allow all them to genuinely contribute to what we learn and **how** we learn. We want our pupils to be confident individuals and appreciate that this means there needs to be quality time and space for social interaction and there should be a focus on social and emotional development. At Dame Catherine Harpur's the needs of each child are addressed in a small-scale environment which serves as a caring, extended 'family.' By forging strong links with our local and wider community, we appreciate the valuable role they play in the education of the children. We also provide pupils with a range of extra-curricular activities and off-site educational visits as we believe these provide valuable enrichment to the curriculum. Through our rich curriculum ( including our PSHE and Citizenship curriculum ) we promote British values set out by the Government's 2011 Prevent Strategy. The core values are: democracy, the rule of law, individual liberty, mutual respect and tolerance of those of different faiths and beliefs.

*Our school follows the child protection procedures as defined by Derbyshire Safeguarding Board and multi agency threshold guidance. We work with partners to ensure the best outcomes for children and young people.*

*This policy applies to all staff, volunteers and visitors to our school as safeguarding is everyone's responsibility.*

*As the nature of the school is wide ranging and children come from a mix of backgrounds the school is aware that abuse can occur and has no such boundaries.*

*Our belief is that "it could happen here" and "we have the interest of the children" as our priority.*

This policy is shared with parents/carers through our schools website:  
<https://damecatherines.org/>

Our children and young people understand our responsibility to keep them safe.

All staff (this includes volunteers) are aware of the safeguarding procedures in our school and these are explained to as part of staff induction. There is a hard copy of child protection documents in a reference safeguarding folder which is available to all staff / volunteers.

This includes:

- the child protection policy;
- the behaviour policy for pupils/students;
- the staff behaviour policy (code of conduct);
- the safeguarding response to children who go missing from education;

- the role of the designated safeguarding lead (Ms Lorna Harvey, Headteacher);
- Keeping Children Safe in Education document

### 1.3 Our responsibilities

**Dame Catherine Harpur's School and Nursery** fully recognises its responsibilities for Child Protection and Safeguarding, this Policy sets out how the School/college will deliver these responsibilities. This is an overarching policy.

Child as written in this policy is of statutory school age. We have children who are in the Early Years Foundation Stage (EYFS) as a provider for children aged 3 and above. EYFS welfare and safeguarding requirements - policies and procedures are outlined in Appendix B, sources being: Early Years Foundation Stage Statutory Framework (revised 2017) and Ofsted's Inspecting safeguarding in early years, education and skills settings (2019)

A vulnerable adult as written into this policy is so defined as still in the setting and who is or may be in need of community care services by reason of mental or other disability, age, or illness, who is unable to take care of him/herself, or unable to protect him/herself from significant harm or exploitation. Dame Catherine Harpur's School does not have pupils in this category.

The policy is consistent with Derby and Derbyshire Safeguarding Children web-based procedures which can also be found at <https://www.derbyscb.org.uk/staff-and-volunteers/policies-and-procedures/> The school/college will adhere to the Derby and Derbyshire Safeguarding Children procedures.

This policy should be read in conjunction with:

'Working Together to Safeguard Children' (July 2018) which is statutory guidance to be read and followed by all those providing services for children and families, including those in education.

"Keeping Children Safe in Education" September 2020 which is the statutory guidance for Schools and Colleges.

"What to do if worried a child is being abused" (March 2015)

"Information Sharing: Advice for practitioners providing safeguarding services to children, young people, parents and carers (July 2018)

"The Prevent Duty Departmental, advice for Schools and child care providers" (June 2015).

Furthermore, we will follow the Procedures set out by the local Derby City & Derbyshire Safeguarding Childrens Board.

In accordance with the above procedures, we carry out an annual audit of our Safeguarding provision (S175 Safeguarding Audit, which is a requirement of the Education Act 2002 & 2006) which can be made available to the Local Derbyshire Safeguarding Childrens Board.

## 1.4 Our Principles

Safeguarding arrangements at this school/college are underpinned by three key principles:

- Safeguarding is everyone's responsibility: all Staff / anyone who has contact with a child or young person including Governors and volunteers should play their full part in keeping children (Includes vulnerable adults when in their setting) safe;
- We will aim to protecting children using national, local and school child protection procedures;
- We aim to work in partnership and have an important role in multi-agency safeguarding arrangements as set out by Working Together 2018;
- That all Staff-/anyone who has contact with a child or young person including Governors and volunteers have a clear understanding regarding abuse and neglect in all forms; including how to identify, respond and report. This also includes knowledge in the process for allegations against professionals. Staff, (Governors and Volunteers) should feel confident that they can report all matters of Safeguarding in the School or College where the information will be dealt with swiftly and securely, following the correct procedures with the safety and wellbeing of the children in mind at all times.
- That we operate a child-centred approach: a clear understanding of the needs, wishes, views and voices of children.

## 1.5 Our Policy

There are 6 main elements to our Policy, which are described in the following sections:

- The types of abuse that are covered by the policy;
- The signs of abuse that that all Staff / anyone who has contact with a child or young person including Governors and volunteers should look out for;
- How to report a concern, who to go to within school/college; including how /who to report to at the relevant agencies;
- Roles and responsibilities for Safeguarding;
- Expectations of all Staff / anyone who has contact with a child or young person including Governors and volunteers with regard to Safeguarding, and the procedures and processes that should be followed, including the support provided to children ;
- How the school/college will ensure that all Staff / anyone who has contact with a child or young person including Governors and volunteers are appropriately trained; this includes, receiving regular updates and undertaking annual whole school training in safeguarding.
- Are checked for their suitability to work within the School/college;
- How the policy will be managed and have its delivery overseen.

Through implementation of this policy we will ensure that our School/college provides a safe environment for children (and vulnerable adults when in their setting) to learn and develop. We will cross reference to other policies relevant to our safeguarding in the school/college and make reference to them in this policy where relevant.

## **2. Types of Abuse**

### **2.1 Children who may require early help**

All Staff (Governors and Volunteers) working within the School should be alert to the potential need for early help for children, considering following the procedures identified for initiating early help using the local and current Safeguarding Partnership Threshold Document, and also consideration for a child who:

- Is disabled and has specific additional needs;
- Has special educational needs;
- Is a young carer;
- Is a privately fostered child;
- Has returned home to their family from care;
- Is showing signs of engaging in anti-social or criminal behaviour;
- Is in a family circumstance presenting challenges for the child, such as substance abuse, adult mental health, domestic violence; and/or
- Is showing early signs of abuse and/or neglect;
- Is showing signs of displaying behaviour or views that are considered to be extreme;
- Is misusing drugs or alcohol themselves;
- Not attending school or are at risk of exclusion from school;
- Frequently going missing/goes missing from care or from home;
- Is at risk of modern slavery, trafficking, exploitation, radicalised;
- Not in education, training or employment after the age of 16 (NEET);

These children are therefore more vulnerable; this School/College will identify who their vulnerable children are, ensuring all Staff and Volunteers know the processes to secure advice, help and support where needed.

### **2:2 Child Abuse**

In relation to children safeguarding and promoting their welfare is defined as:

- Protecting children from maltreatment;

- Preventing impairment of children's' health or development;
- Ensuring that children are growing up in circumstances consistent with the provision of safe and effective care;
- Taking action to enable all children to have the best outcomes.

There are four types of child abuse as defined in 'Working Together to Safeguard Children' (2018) which is defined in the 'Keeping Children Safe in Education Statutory Guidance 2018' as:

- **Physical Abuse** - may involve hitting, shaking, throwing, poisoning, burning/scalding, drowning, suffocating, or otherwise causing physical harm to a child. Physical harm may also be caused when a parent or carer fabricates the symptoms of, or deliberately induces, illness in a child.
- **Emotional Abuse** - is the persistent emotional maltreatment of a child such as to cause severe and persistent adverse effects on the child's emotional development. It may involve conveying to children that they are worthless or unloved, inadequate, or valued only insofar as they meet the needs of another person. It may include not giving the child opportunities to express their views, deliberately silencing them or 'making fun' of what they say or how they communicate. It may feature age or developmentally inappropriate expectations being imposed on children. These may include interactions that are beyond the child's developmental capability, as well as overprotection and limitation of exploration and learning, or preventing the child participating in normal social interaction. It may involve seeing or hearing the ill-treatment of another. It may involve serious bullying (including cyber bullying), causing children frequently to feel frightened or in danger, or the exploitation or corruption of children. Some level of emotional abuse is involved in all types of maltreatment of a child, though it may occur alone.
- **Sexual Abuse** involves forcing or enticing a child or young person to take part in sexual activities, not necessarily involving a high level of violence, whether or not the child is aware of what is happening. The activities may involve physical contact or non-contact activities, such as involving children in looking at, or in the production of, sexual images, watching sexual activities, encouraging children to behave in sexually inappropriate ways, or grooming a child in preparation for abuse (including via the internet). Sexual abuse is not solely perpetrated by adult males; women can also commit acts of sexual abuse, as can other children.
- **Neglect** is the persistent failure to meet a child's basic physical and/or psychological needs, likely to result in the serious impairment of the child's health or development. It may include a failure to:
  - Provide adequate food, clothing and shelter.
  - Protect a child from physical and emotional harm or danger.
  - Ensure adequate supervision (including the use of inadequate care-givers); or
  - Ensure access to appropriate medical care or treatment.
  - Respond to a child's basic emotional needs



**Bullying** and forms of bullying on and off line including prejudice based and Cyber Bullying is also abusive which will include at least one, if not two, three or all four, of the defined categories of abuse .

### **2.3. Specific Safeguarding Issues**

There are specific issues that have become critical issues (highlighted are current key concerns in Derbyshire ) in Safeguarding that Schools and Colleges will endeavour to ensure their Staff, (Governors and Volunteers) are familiar with; having processes in place to identify, report, monitor and which are included within teaching:

- Bullying including cyber bullying
- Child Sexual Exploitation (CSE) and as defined by Working Together 2018
- Children at risk of criminal exploitation (CRE) as defined by local safeguarding partnership procedures
- Domestic Violence
- Drugs
- Fabricated or induced illness
- Faith abuse
- Female Genital Mutilation (FGM)
- Forced Marriage
- Gangs and Youth Violence
- Gender based violence/Violence against women and girls (VAWG)
- Hate
- Mental Health
- Private Fostering
- Preventing Radicalisation
- On line abuse/Sexting
- Teenage Relationship abuse
- Modern Slavery and Trafficking
- Missing children and vulnerable adults
- Child sexual abuse within the family
- Poor parenting, particularly in relation to babies and young children

### **3. Signs of Abuse (Child Protection)**

#### **3.1. Physical Abuse**

Most children will collect cuts and bruises and injuries, and these should always be interpreted in the context of the child's medical / social history, developmental stage and the explanation given. Most accidental bruises are seen over bony parts of the body, e.g. elbows, knees, shins, and are often on the front of the body. Some children, however, will have bruising that is more than likely inflicted rather than accidental.

Important indicators of physical abuse are bruises or injuries that are either unexplained or inconsistent with the explanation given; these can often be visible on the 'soft' parts of the body where accidental injuries are unlikely, e.g. cheeks, abdomen, back and buttocks. A delay in seeking medical treatment when it is obviously necessary is also a cause for concern.

The physical signs of abuse may include:

- Unexplained bruising, marks or injuries on any part of the body
- Multiple bruises- in clusters, often on the upper arm, outside of the thigh
- Cigarette burns
- Human bite marks
- Broken bones
- Scalds, with upward splash marks.
- Multiple burns with a clearly demarcated edge.

Changes in behaviour that can also indicate physical abuse:

- Fear of parents being approached for an explanation
- Aggressive behaviour or severe temper outbursts
- Flinching when approached or touched
- Reluctance to get changed, for example in hot weather
- Depression
- Withdrawn behaviour
- Running away from home.

#### **3.2. Emotional Abuse**

Emotional abuse can be difficult to identify as there are often no outward physical signs. Indications may be a developmental delay due to a failure to thrive and grow, however, children who appear well-cared for may nevertheless be emotionally abused by being taunted, put down or belittled. They may receive little or no love, affection or attention from their parents or carers. Emotional abuse can also take the form of children not being allowed to mix or play with other children.

Changes in behaviour which can indicate emotional abuse include:

- Neurotic behaviour e.g. sulking, hair twisting, rocking
- Being unable to play
- Fear of making mistakes
- Sudden speech disorders
- Self-harm
- Fear of parent being approached regarding their behaviour
- Developmental delay in terms of emotional progress.

### **3.3. Sexual Abuse**

It is recognised that there is under reporting of sexual abuse with in the family. School / College all staff and volunteers should play a crucial role in identifying / reporting any concerns that they may have through, for example, the observation and play of younger children and understanding the indicators of behaviour in older children which may be underlining of such abuse.

All Staff and volunteers should be aware that adults, who may be men, women or other children, who use children to meet their own sexual, needs abuse both girls and boys of all ages. Indications of sexual abuse may be physical or from the child's behaviour. In all cases, children who tell about sexual abuse do so because they want it to stop. It is important, therefore, that they are listened to and taken seriously.

The physical signs of sexual abuse may include:

- Pain or itching in the genital area
- Bruising or bleeding near genital area
- Sexually transmitted disease
- Vaginal discharge or infection
- Stomach pains
- Discomfort when walking or sitting down
- Pregnancy.

Changes in behaviour which can also indicate sexual abuse include:

- Sudden or unexplained changes in behaviour e.g. becoming aggressive or withdrawn
- Fear of being left with a specific person or group of people
- Having nightmares
- Running away from home
- Sexual knowledge which is beyond their age, or developmental level
- Sexual drawings or language
- Bedwetting
- Eating problems such as overeating or anorexia
- Self-harm or mutilation, sometimes leading to suicide attempts
- Saying they have secrets they cannot tell anyone about
- Substance or drug abuse

- Suddenly having unexplained sources of money
- Not allowed to have friends (particularly in adolescence)
- Acting in a sexually explicit way towards adults.

### **3.4. Neglect**

It can be difficult to recognise neglect, however its effects can be long term and damaging for children.

The physical signs of neglect may include:

- Being constantly dirty or 'smelly'.
- Constant hunger, sometimes stealing food from other children.
- Losing weight, or being constantly underweight.
- Inappropriate or dirty clothing.

Neglect may be indicated by changes in behaviour which may include:

- Mentioning being left alone or unsupervised.
- Not having many friends.
- Complaining of being tired all the time.
- Not requesting medical assistance and/or failing to attend appointments.

### **3.5 Specific Safeguarding Issues**

In understanding the signs and indicators of specific issues listed earlier in this policy, this school will incorporate the signs of abuse and specific safeguarding issues on safeguarding into briefings, staff Induction training, and ongoing development training for all Staff and anyone who has contact with a child or young person on a regular basis as Governors and volunteers.

The school/college will also access broad Government guidance, local procedures, strategies and tools through the [Derbyshire Safeguarding Childrens Board](#)

The Designated leads and those with responsibility for safeguarding will use the information available to them in Derbyshire [Schools Net Keeping Children Safe in Education](#) to help all staff develop the knowledge and understanding pertaining to national and local emerging concerns.

### 3.6 Prevent Duties

The School/college will ensure all staff including governors and volunteers adhere to their duties in the Prevent guidance 2015 to prevent radicalisation. The HT/Principal and Chair of Governors will:

- Establish or use existing mechanisms for understanding the risk of extremism;
- Ensure staff understand the risk and build capabilities to deal with issues arising
- Communicate the importance of the duty;
- Ensure all Staff (governors and volunteers) implement the duty.

This School/college will respond to any concern about Prevent as a Safeguarding concern and will report in the usual way using local Safeguarding Procedures. We will seek to work in partnership, undertaking risk assessments where appropriate and proportionate to risk, building our children's resilience to radicalisation. We will make referrals into CHANNEL where the risk is identified and the pupil/student may need de-radicalisation.

The school/college is committed to providing effective filtering and monitoring systems, this will include monitoring the activities of children when on-line in the school/college and actions taken relevant to the activity.

The school/college will use the relevant forms to record any concerns, keeping records which will be treated as a Child Protection Record, storing them as appropriate. (cross reference here to forms being used)

### 3.7 Child Sexual Exploitation (CSE) and Children at risk of Exploitation (CRE) (Child Protection)

***We recognise this is relevant to both boys and girls***

Risk factors may include;

- Going missing, staying out unusually late
- Engagement in offending
- Overly secretive
- Disengagement from education
- Using drugs or alcohol
- Unexplained gifts/money
- Repeat concerns about sexual health
- Decline in emotional wellbeing
- Association in gangs
- Unexplained injuries
- Carrying weapons, access to or carrying unusual number of mobile phones

All suspected or actual cases of CSE/CRE are a Safeguarding concern in which Child Protection procedures will be followed; this will include a referral to the police. If any staff are concerned about a pupil, they will refer to the Safeguarding Designated Lead/s within the School

### **3.8 Female Genital Mutilation (Child Protection)**

The School/college recognises and understands that there is now a mandatory reporting duty for all teachers to report to the police where it is believed an act of FGM has been carried out on a girl under 18 in the UK. Failure to do so may result in disciplinary action being taken.

All suspected or actual cases of FGM are a Safeguarding concern in which Safeguarding procedures will be followed; this will include a referral to the police. If any staff are concerned about a pupil, they will refer to the Safeguarding Designated Lead/s within the School unless there is a good reason not to do so.

Signs may include;

- Days absent from school
- Not participating in Physical Education
- In pain/has restricted movement/frequent and long visits to the toilet/broken limbs
- Confides that she is having a special procedure, cut or celebration
- Unauthorised and or extended leave, vague explanations or plans for removal of a female in a high risk category\* especially over the summer period
- Plans to take a holiday which may be unauthorised, unexplained or extended in a country known to practice FGM

*\*parents from a country who are known to practice FGM*

### **3.9 Allegations of abuse against other children/Peer on Peer abuse**

#### **(Child Protection)**

We recognise that some children abuse other children or their peers; therefore, the reasons for this are complex and are often multi-faceted. We understand that we need as a school to have clear mechanisms and procedures in place to identify and report incidents or concerns. We aim to reduce this behaviour and any related incidents with an expectation to eliminate this conduct in the school/college.

Peer on peer abuse is a Safeguarding concern and will require a discussion with the Designated Safeguarding Lead who will seek advice from agencies and professionals including reference to the Safeguarding procedures as outlined by the local authority. This will may a referral into the Police and Social Care. The school/college will consider and may apply the disciplinary procedure. The school/college will offer support to a victim.

We recognise peer on peer abuse can take some of these forms;

- Language seen as derogatory, demeaning, inflammatory;
- Unwanted banter;
- Sexual harassment;
- Sexual Violence;
- Hate;
- Homophobia;
- Based on gender differences and orientation;
- Based on difference.

We will pay adherence to the guidance- Sexual Violence and Sexual Harassment in Schools/Colleges between children (December 2017) and have a strategy in the school/college to identify, report and respond to any issues/incidents raised. We aim to challenge this type of abuse. We also aim to use approaches in the curriculum to address and tackle peer on peer abuse.

This school acknowledges the updated Voyeurism Act 2019, and the concerns around up skirting. This is a form of peer on peer abuse and may constitute a criminal act. Any incidents will be treated as a safeguarding concern and this school will follow their usual procedures when dealing with such an incident. This will mean reporting an incident to the police.

### **3.10 The sending of indecent images from one person to another through Digital Media Devices**

This school/college accepts that this is a Safeguarding concern and one that is increasing which requires a robust response. We will seek advice from agencies and professionals acknowledging that there are both national and local guidance that we need to adhere to in order to tackle the concerns and work in partnership with our agencies.

We will refer to:

[Derby City & Derbyshire Thresholds Document](#)

["Sexting in Schools & Colleges: Responding to incidents & safeguarding young people" UK Council for child internet safety](#)

[The DfE guidance 2018 on Searching Screening and Confiscation Advice for Schools](#)

### **3.11 The criminal exploitation of children: County Lines**

Signs which may indicate criminal exploitation:

- Persistently going missing from school or home and / or being found out-of-area;
- Unexplained acquisition of money, clothes, or mobile phones
- Excessive receipt of texts /phone calls
- Relationships with controlling /older individuals or groups
- Leaving home / care without explanation
- Suspicion of physical assault /unexplained injuries
- Parental concerns
- Carrying weapons
- Significant decline in school results / performance
- Gang association or isolation from peers or social networks
- Self-harm or significant changes in emotional well-being

Criminal exploitation of children is a Safeguarding concern and will require a discussion with the Designated Safeguarding Lead who will seek advice from agencies and professionals; including, reference to the Safeguarding procedures as outlined by the local authority. This will mean a referral into the Police and Social Care. The school/college will offer support to a victim.

### **3.12 Carrying knives/offensive Weapons & Gang Culture**

Bringing and carrying a knife/offensive weapon onto school/college premises is a criminal offence and immediate action will be taken by calling the police. The guidance on Searching, Screening and Confiscation for Head teachers, schools and Governors, January 2018 will be consulted and the school/college will consider and may apply the disciplinary procedure.

If a member of staff suspects a pupil/student being involved in gang culture, this is a safeguarding concern and will require a discussion with the Designated Safeguarding Lead who will seek advice from agencies and professionals including reference to the Safeguarding procedures as outlined by the local authority. The pupil/student may be an exploited child and victim to which the school/college will offer support.

## **4. Safeguarding Roles and Responsibilities**

**4.1 All Staff / anyone who has contact with a child or young person including Governors and volunteers have responsibility for the following:**

- Being aware of the Derby City and Derbyshire Safeguarding Procedures, and ensuring these procedures are followed;
- Listening to, and seeking out, the views, wishes and feelings of children and young people, ensuring in this that the child's voice is heard and referred to;
- Knowing who the School Designated Lead/Teacher(s) for Safeguarding are and the relevant links for CIC (Child in Care / Looked After Children), SEND and Anti- Bullying including who is the School link Governor for Child Protection and Safeguarding;



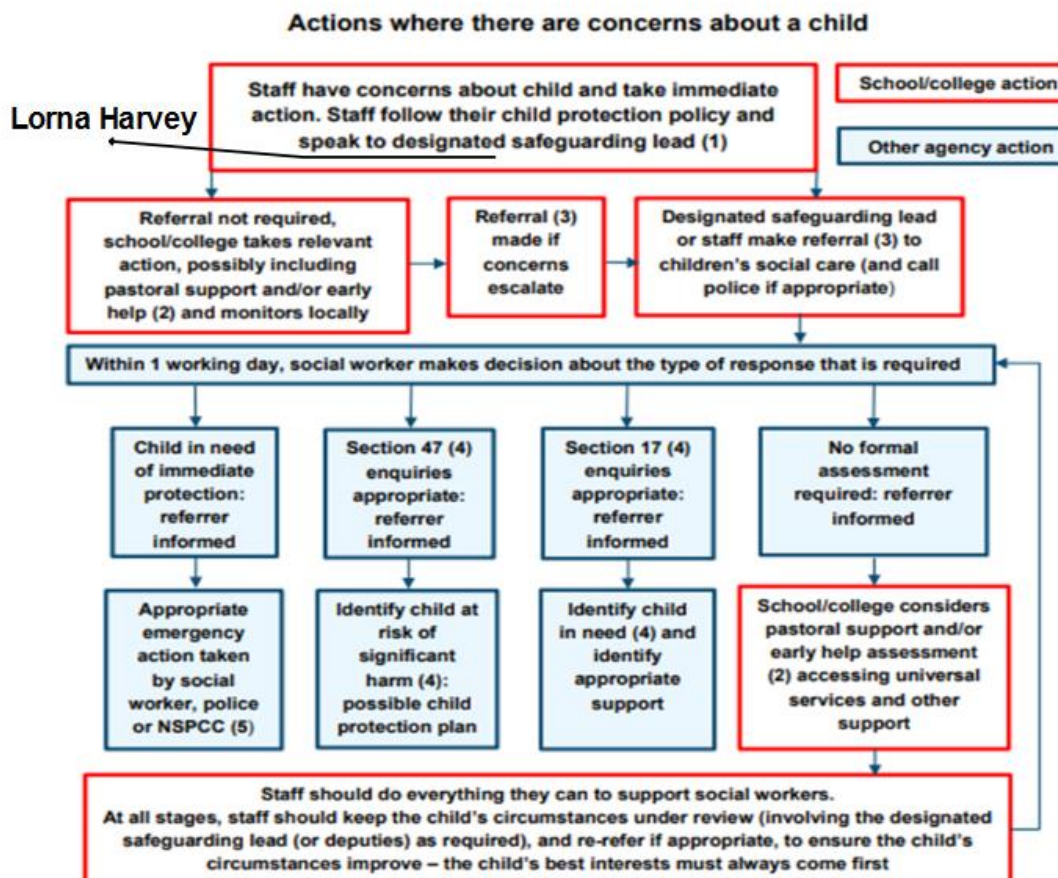
- Being alert to the signs of abuse, including specific issues in Safeguarding and their need to refer any concerns to the Safeguarding Designated Lead(s) in the School or College;
- To be aware of the 'Allegations Against Professionals' LADO procedures and feel confident in been able to use them including how to report concerns about other staff and the setting;
- That any concerns any staff have about a Headteacher/Principal/Proprietor, should be referred to the Chair of Governors.
- To be aware of Whistle Blowing procedures and where to obtain further information, advice and support. (according to the school's Whistleblowing policy)
- Being aware of the 'Guidance for Safer Working Practices when working with Children and Young People in education settings, 2015', relevant sections of 'KCSIE 2020' and local procedures for 'Safer Working Practices'. (Cross reference to similar policies, protocols the school/college has);
- Ensuring that their Child Protection training is up to date, undertaking refresher/update training at least annually;
- Sharing information and working together with agencies to provide children and young people with the help and support they need;
- Supporting pupils who have been abused in accordance with his/her Child Protection Plan;
- Seeking early help where a child and family would benefit from co-ordinated support from more than one agency (e.g. education, health, housing, police) to prevent needs escalating to a point where intervention would be needed via a statutory assessment;
- If at any time it is considered that the child may be a 'Child in Need' as defined in the Children Act 1989; or that the child has suffered significant harm or is likely to do so, a referral is made to Local Authority Children's Social Care;
- If Staff, Governors and Volunteers have concerns regarding a child they should raise these with the Designated Safeguarding Lead(s) who will normally decide take the next step, (however, any member of Staff, Governor or Volunteer in a School/College can make a referral);
- If they feel unclear about what has happened to their concerns following a referral they can enquire further and obtain feedback;
- All Staff / anyone who has contact with a child or young person including Governors and volunteers are aware of the Derby City and Derbyshire Safeguarding Children Board's Escalation Policy and Process, which may be followed if a staff member fears their concerns have not been addressed, and of the Confidential Reporting Code (Whistle Blowing 2015) which can be accessed on the Derbyshire Safeguarding Children Board website or the Derbyshire Schoolsnet site Keeping Children Safe in Education tile
- To recognise the new requirements on Children Missing From Education and particularly those where it is believed a child/children may be leaving the country;

- To refer & adhere to Children Missing from Education (CME) processes and procedures as set out by national and local guidelines on all children where there is a concern they may be missing or who are missing.
- Recognising that Home Educated Children can be more vulnerable than other children and with regard to the motivations of the intention to home educate. Therefore, recognising the responsibilities the school/college has to those who are thinking about or who are about to home educate, including those who have been removed from a school/college roll with a view to home educate;
- Recognising that looked After Children and care leavers are more vulnerable than other children, often having poorer educational outcomes; therefore, ensuring their wellbeing, safety and welfare, helping them to reach their potential which includes the looked after child who is moving on. The school/college will also ensure that care leavers are supported with pathways including liaison with the local authority where a personal advisor will be appointed;
- All Staff / anyone who has contact with a child or young person including Governors and volunteers recognise their roles and responsibilities under SEND that those children/vulnerable adults in the setting may not be able to recognise abuse, abusive situations or protect themselves from significant harm and exploitation;
- Recognising the needs of young carers in that they can be more vulnerable or placed at risk. Therefore, being able to identify young carers and ensure they are supported to help reach their potential with an understanding that staff and volunteers will need to refer into early help social care services for an assessment of their needs;
- All Staff / anyone who has contact with a child or young person including Governors and volunteers are aware of the Private Fostering Policy and have an understanding of host families and recognising they have a duty to notify the local Children's Social Care department if it is thought or known that a child or young person may be Privately Fostered or subject to a host family arrangement which is unclear or ambiguous;
- All Staff / anyone who has contact with a child or young person including Governors and volunteers are aware of Extremism, which include the signs of, alerts to concerning behaviours, and ideologies considered to be extreme; as well as having an understanding of the British Values Agenda. This will include attendance at training on either Prevent/Wrap or training considered sufficient by the local authority which fulfils the requirements of the prevent Duty for schools/colleges;
- All Staff / anyone who has contact with a child or young person including Governors and volunteers know about Prevent duties and will report any concerns to the Safeguarding Designated Lead in the school who has responsibilities under Prevent to take action, offer advice and support which may include a referral into Channel using the case pathway process;
- All Staff / anyone who has contact with a child or young person including Governors and volunteers should recognise that children are capable of abusing other children or their peers, working to reduce and eliminate such behaviour in their setting.

- All Staff / anyone who has contact with a child or young person including Governors and volunteers should recognise what is child sexual exploitation and trafficking and know that they should seek advice and how to report any issues / incidents:
- All Staff / anyone who has contact with a child or young person including Governors and volunteers should recognise a child may be criminally exploited or involved in gang culture and should seek advice and report any issues /incidents;
- When using reasonable force this is in line with national guidelines and takes into account individual pupil needs and risk management /care plans and in particular with regard to SEND;
- All Staff / anyone who has contact with a child or young person including Governors and volunteers should recognise homelessness and the impact of the pupil facing homelessness, or who is homeless;
- This School/College recognises the importance of learning from national and local Serious Case Reviews and Thematic Learning Reviews. We are aware of the impact this has on how we carry out our Safeguarding and Child Protection responsibilities and roles.

**4.2 All Staff / anyone who has contact with a child or young person including Governors and volunteers have responsibility for the following:**

- To share and report a concern, know how to do this and who to and record where appropriate in the role:



#### 4.3 Governors, Proprietors and School Leadership are responsible for (and need to ask a School/College about):

- Taking leadership responsibility for the school's Safeguarding and Child Protection arrangements;
- Ensure there are robust safer recruitment procedures and a framework of checks, tracking and monitoring;
- That they are up to date with emerging issues in Safeguarding and recognise the strategies by the Local Authority in trying to keep children safe in Derbyshire;
- Ensuring that we have a nominated link Governor for Child Protection and Safeguarding who can also provide a link to the Local Authority on matters of Safeguarding in their School / College liaising with other partners and agencies;
- Ensuring that we have a lead Safeguarding Designated Lead(s) for Child Protection, appointed from the Senior Management Team and one who oversees and line manages the activities and the activities of all other leads in the school/college. The number of DSL's needs to be sufficient in number depending upon the size and demands of the school. That

the DSL's are fully equipped to undertake the Safeguarding role and that they have access to the appropriate training and that has updates at least annually and with certified training very two years.

- That a Designated Safeguarding Lead is available at all times during the school day (if not in person then contactable in case of emergency by phone) and there is a contact for school holiday activities; where this is not available or in exceptional circumstances, there is cover in place. The leadership team will ensure there is cover at all times and there is a clear pathway for raising and reporting concerns in a timely way. This will include a DSL being a point of contact for trips, outings and residential visits;
- Ensuring that appointed Designated Safeguarding Leads are fully equipped with the knowledge and skills to carry out the role and have access to appropriate regular training to help them keep up to date;
- That we work towards/have a nominated link Governor for CIC (Children in Care/ Looked after Children) and SEND alongside other nominated leads in the School/College on these issues;
- We have an appointed teacher who is responsible for looked after children who understands his/her Safeguarding responsibilities and is fully aware of the Local Safeguarding procedures and the school's procedures for reporting, responding and recording Child Protection concerns;
- That there are procedures are in place in handling allegations against Staff, or Volunteers and any concerns staff and volunteers have (including concerns about the setting) are referred to the Local Authority Designated Lead (LADO) in every case;
- All Staff / anyone who has regular contact with a child or young person including Governors, volunteers and frequent visitors who will be working in the school/college is given a mandatory induction which includes ensuring they have knowledge regarding abuse, neglect, specific safeguarding issues and familiarisation with Child Protection responsibilities. The induction will also include procedures to be followed if anyone has any concerns about a Child's Safety or welfare, and knowledge about the (schools/college) policies and procedures;
- That all Staff have regular reviews of their own practice to ensure ongoing personal/professional development;
- All Staff / anyone who has contact with a child or young person including Governors and volunteers receives the appropriate training which is regularly updated;
- That we have in place effective ways to identify emerging problems and potential unmet needs for individual children and families;
- That important policy such as those for behaviour and bullying, are kept up to date;
- To ensure that children are taught about Safeguarding, including on line, through teaching and learning opportunities, as part of providing a broad and balanced curriculum;

- We have in place an on-line Safety Policy equipped to deal with a widening range of issues associated with technology;
- That the curriculum will implement sex, relationship and healthy relationship teaching and make the best use of PSHE to cover Safeguarding issues with children in line with the statutory obligations 2020;
- That we understand the need to identify trends and patterns regarding Children Missing from Education (CME) and to respond to / refer where required;
- That we understand the updated definition of child sexual exploitation and expectations around identifying, reporting and responding to any potential or actual cases of;
- That we notify the Children's Social Care department if there is an unexplained absence of a pupil who is the subject of a Child Protection Plan.
- That we notify the Children's Social Care department if it is thought or known that a child or young person may be privately fostered.
- That we use the Local Authority Case Referral Pathway on reporting concerns about extremism or views considered to be extreme which may include a referral to PREVENT/CHANNEL and/or Social Care.
- Acting on the 'Learning from Serious Case Reviews' – see appendix A;
- Ensures that all Staff (governors and volunteers) are made aware of the Confidential Reporting Code (Whistle Blowing 2015).
- That all Child Protection records are kept centrally, kept up to date, are secure and reviewed annually.
- Making sure that the Child Protection Policy is available to parents and carers as appropriate.

#### **4.4 Creating a safe environment:**

- We will ensure that All Staff / anyone who has contact with a child or young person including Governors and volunteers are competent to carry out their responsibilities for Safeguarding in promoting the welfare of children by creating an environment and an ethos whereby all Staff including volunteers feel able to raise concerns, along with being supported in their Safeguarding role.
- We will endeavour to create a culture of listening to children, taking account of their wishes, feelings and voices both in individual decisions and in the School's development (use of a Schools counsel or similar).
- That the building; including its surroundings, are safe and one where children can feel safe.

- That parents/carers know about our principles in Safeguarding, who along with the local community are made familiar with including making public on our website and are able to participate in any policy, procedure or initiatives which contributes to the safety of the children in that local community.
- That we have clear protocols on reception for visitors and contractors with procedures in place to ensure the appropriate questions are asked and checks made in line with KCSIE regarding the Single Central Record.
- We recognise the host families, homestays/exchange visits abroad and the need to provide safe provision and exchanges and should this apply to any families at DCHS we will ensure the suitability of adults in families when arranging hosting and exchanges;
- We recognise that where our school places a pupil we are responsible for the safeguarding of that pupil and will check and review those arrangements to reassure ourselves of those safeguarding arrangements and that of the health, safety & wellbeing of that pupil. We will obtain written confirmation from the provider that checks have been carried out on individuals working in any such arrangement;

#### **4.5 Recruitment, Staffing:**

- We must prevent people who pose a risk of harm from working with children by adhering to statutory responsibilities to check all staff who work with children, taking proportionate decisions on whether to ask for any checks beyond what is required;
- We must, where relevant, check the identity of a person being considered for appointment and their right to stay in the UK;
- We must undertake overseas checks if a staff member being employed or has returned from a period of employment from abroad according to the school's approach as defined by the Governing Board. ( This is currently to ensure checks are done on all staff appointed who have worked abroad within the past 5 years, but, depending on the role and nature of the work, the Headteacher or Chair should risk assess whether a check is necessary for staff having lived abroad over 5 years ago; )
- We must ensure staff and volunteers undergo appropriate checks via the Disclosure and Barring Service (DBS) relevant to their post and this includes any Prohibition checks necessary for the post;
- We must be aware of the Disqualification by Association rules; having a relevant procedure in place which can be applied if required;

- We must have procedures in place to make a referral to the Disclosure and Barring Service (DBS) if a person in regulated activity has been dismissed, removed due to Safeguarding concerns, or would have been had they not resigned; aware that this is a legal duty;
- That we make use of the DBS Service where appropriate;
- That applications are scrutinised and further enquiries are made and evidenced around any clarification or need for further exploration;
- We must have at least one person on any appointment panel who has undertaken Safer Recruitment Training, including a Governor (School may choose their training ensuring at a minimum it covers the 'Keeping Children Safe Guidance', and equips them with the necessary knowledge and skills);
- We must pursue references with measures in place to ensure scrutiny and to verify all potential staff;
- Raise an alert with a senior member of the leadership team or Chair of Governors (in the case of Headteacher) if there are gaps in references and / or any missing references;
- That our Volunteers are adequately supervised, being aware of the differences between supervised and unsupervised interaction with the children and have risk assessments in place for volunteers in the school undertaking activities with the children;
- That all our governors have the enhanced DBS and other checks that may be required;
- That we understand the requirements if schools are hiring out their premises or use staff from their setting around asking the relevant questions, making sure checks are in place to ensure safeguarding the children / young people who attend clubs, holiday schemes and other activities on their premises;
- We will be mindful of who we are hiring our premises to and refuse the hiring of premises for any activity deemed not in the interests of the children/young people the school/college, the local community and or viewed to be inflammatory e.g.- banned political groups



The Lead Designated Safeguarding Lead is: **Lorna Harvey (Headteacher)**

The Designated safeguarding leads(s) are: **Fay Younger**

The Appointed Teacher for Looked after children/virtual School: **Lorna Harvey**

The Appointed Teacher for SEND: **Lorna Harvey**

The Designated Lead(s) is/are for Anti- Bullying: **Lorna Harvey**

The Designated Link Governor for Safeguarding is: **Christina Oppenheimer**

The Designated Link Governor for Anti- Bullying is: **Christina Oppenheimer**

The Designated link Governor for Looked after Children (Child in Care) is: **Christina Oppenheimer**

## **5. Safeguarding Processes and Procedures**

The School will deliver its responsibilities for identifying and acting on early help needs, Safeguarding and Child Protection in line with the policies and procedures identified in the [Derby City & Derbyshire Safeguarding Children's Board Policies and Procedures Guidance](#).

The Threshold Document is available and assists with meeting a child's needs in Derbyshire and can be found in the Derbyshire & Derby City Safeguarding Board Procedures This document should be used to help identify the level of concern and next course of action.

### **5.1. Early help**

All Staff who has contact with a child or young person including Governors and volunteers are made aware of what Early Help means, how to identify emerging needs and understanding their role within it. This means sharing information and having discussions with the Designated Safeguarding Lead, liaising with other professionals and supporting children identified in the school (i.e. potentially vulnerable and those who are vulnerable) who may therefore need Early Help intervention.

The provision of Early Help Services should form part of a continuum of help and support to respond to the different levels of need of individual children and families – for more information School all Staff can refer to Derbyshire's 'Early Help Offer' and Starting Point [https://www.derbyshire.gov.uk/social\\_health/children\\_and\\_families/support\\_for\\_families/default.asp?VD=startingpoint](https://www.derbyshire.gov.uk/social_health/children_and_families/support_for_families/default.asp?VD=startingpoint)

Those who are providing their own early help provision in the school can demonstrate they have a framework and structures to support the work including information sharing, procedures around

step up into Children's social care, robust recording & advice, and support to staff in early help activity.

Starting Point is Derbyshire's first point of contact and referral service for Children; including advice, support and next steps. This includes a professional's advice line and this is available for the Designated Safeguarding Lead to use.

The school will follow the referral process for all [Early Help requests](#) by using an electronic form made available on the Derbyshire County Council website.

When an online form is received, they are screened, and advice is given around the next steps when early help support for the child and family is being requested.

In all cases the Senior Practitioner/MAT Early Help Manager will decide which service is best placed to meet that child's needs. This manager will contact the school and discuss. Those that meet a threshold will be passed to either the Multi-Agency Team or Children's Social Care for assessment.

## 5.2. Referring to Children's Social Care

**Dame Catherine Harpur's School and Nursery** will ensure that anyone who has contact with a child or young person including Governors and volunteers and who has concerns about the welfare and safety of a child, will discuss with the Designated Safeguarding Lead as soon as they are aware or know about a concern and the Designated Safeguarding Lead reports that concern as soon as possible. The Designated Safeguarding Lead will act upon the information received; however, we also recognise any one can make a referral into social care.

Where welfare and safeguarding concerns are identified e.g. as a child having an injury or has made a disclosure of sexual abuse, this is a child protection concern and safeguarding procedures must be followed. A **telephone referral** must be made to Starting Point Derbyshire's first point of contact for children and younger adults for referral into Children's Social Care.

If the child has been the subject of an Early Help Assessment then a chronology, a copy of the assessment, together with a copy of the Multi-Disciplinary Plan, and any supporting document evidence to support a threshold should be attached to the written confirmation. If the professional does not have a copy, reference to the completed Early Help Assessment should be made in the written confirmation. Details within the reference should include: who undertook the Assessment, and their contact details if known. For Starting Point to provide feedback an e mail contact must be provided and name of the person nominated in school to receive that feedback.

When a member of Staff, volunteer, parent, practitioner, or another person has concerns for a child, and if the school are aware that the case is open to the Multi-Agency Team they should discuss with the Allocated Worker or their manager to request escalation to Children's Social Care. If the child does not at that time have a lead professional or allocated Social Worker the school should contact Starting Point.

Schools should ensure they have spoken to the family about their concerns and proposed actions unless to do so would place the child at significant risk (imminent danger because of a disclosure made); the decision not to inform parents/carers must be justified and the details recorded. If a child makes a disclosure or presents with an injury, it is imperative that advice is sought immediately **prior to the child returning home and as soon as the school become aware of this.**

Essential information for making a referral includes:

- Full names and dates of birth for the child and other members of the family.
- Address and daytime phone numbers for the parents, including mobile.
- The child's address and phone number.
- Whereabouts of the child (and siblings).
- Child and family's ethnic origin.
- Child and family's main language.
- Actions taken and people contacted.
- Special needs of the child, including need for an accredited interpreter, accredited sign language interpreter or other language support.
- A clear indication of the family's knowledge of the referral and whether they have consented to the sharing of confidential information;
- The details of the person making the referral.

Other information that may be essential:

- Addresses of wider family members;
- Previous addresses of the family;
- Schools and nurseries attended by the child and others in the household;
- Name, address & phone number of GP/Midwife/Health Visitor/School Nurse;
- Hospital ward/consultant/Named nurse and dates of admission/discharge;
- Details of other children who may be in contact with the alleged abuser;
- Details of other practitioners involved with the family;
- Child's legal status and anyone not already mentioned who has parental responsibility;
- History of previous concerns and any previous CAF or Initial Assessments completed;
- Any other information that is likely to impact on the undertaking of an assessment or Section 47 Enquiry.

Where there is a difference of professional opinion Schools / colleges are able to escalate their concerns using the [Derby City & Derbyshire Escalation Policy](#) available on the Derbyshire Safeguarding Board's website

### **5.3. Records**

All concerns about a child will be recorded and records kept. This record will be a separate child protection/welfare record held on a separate child protection file and each concern clearly recorded with all decisions, actions taken and with outcomes and feedback to the referrer. We will endeavour to keep centralised records, hold them as private and confidential records but allow access to key staff that is designated in a role to safeguard children at the school/college.

We will follow the Local Authorities' current guidance on the Child Protection Record Keeping Guidance for Schools (incl Transfer, Storage & Retention - July 2017) and await any instruction with regard to the National Inquiry into Child Sexual Abuse (historical Child Protection records on children and records on staff where there are allegations). We will therefore not destroy any child protection/welfare records including records which hold information on allegations against staff and any other person working in the school or connected to the school.

#### **5.4. Recruitment**

This school/college will ensure that Safer Recruitment practices are always followed and that the requirements outlined in the statutory guidance 'Keeping Children safe in Education' and any supporting DBS documentation are followed in all cases.

All interview panels will have at least one member who has undergone Safer Recruitment Training with the necessary skills and knowledge. We will in all cases for example check on;

- the identity of candidates;
- a check of professional qualifications;
- the right to work in the UK;
- make overseas checks where relevant;
- ask for and follow up at least two references;
- scrutinise applications for gaps in employment;
- Questions regarding safeguarding.

We will have a Single Central Record which will cover all Staff, including Governors, and volunteers, frequent visitors, agency and supply, and others according to their role and responsibility. We will ensure this record is regularly updated and reviewed in line with National and Local requirements.

For Independent Schools, including Academies and Free Schools, this will also cover all members of the Proprietor body.

We will ensure that all Staff / anyone who has contact with a child or young person including Governors and volunteers are aware of Government Guidance on Safer Recruitment and Safer Working Practices and that the recommendations are followed.

We will ensure there is a Staff Code of Conduct, ensuring all Staff / anyone who has contact with a child or young person including Governors and volunteers are familiar with Safer Working Practices.

This also includes advice on conduct, safe use of mobile phones and guidance on personal / professional boundaries in emailing, messaging, or participating in social networking environments.

We will ensure that Safeguarding considerations are at the centre of each stage of the recruitment process and if in any doubt will seek further HR and or legal advice.

### **The Disclosure and Barring Service (DBS);**

The Disclosure and Barring Service (DBS) helps employers make Safer Recruitment decisions which helps preventing unsuitable people from working with vulnerable groups, including children.

The DBS are responsible for:

- Processing requests for criminal records checks
- Deciding whether it is appropriate for a person to be placed on or removed from a barred list
- Placing or removing people from the DBS Children's Barred list and Adults' Barred list for England, Wales and Northern Ireland
- Providing an online DBS service

The DBS search police records and in relevant cases, the barred list information, before issuing a DBS certificate to the applicant.

A DBS check will be requested as part of the pre-recruitment checks following an offer of employment, including unsupervised volunteering roles, and staff engaging in regulated activity, where the definition of regulated activity is met.

We will have a clear understanding of what regulated activity is and implications for volunteers in the school/college. This may mean undertaking risk assessments on any activity.

We will follow advice on DBS checks as detailed by this guidance and this will include;

- Where relevant a separate Barred Check List has been completed;
- That individuals are not disqualified from working with children under the Child Care (Disqualification) Regulations 2009 and will adhere to any changes made to this;
- A check to include a Secretary of State Prohibition Order (Teacher Prohibition Order) and this may mean on Teaching Assistants;
- A Section 28 Direction Check where relevant, which prohibits or restricts a person from taking part in any management of an Independent school, including Academy or Free school.

## **5.5 Dealing with allegations against staff and volunteers who work with children**

The School/College will adhere to the procedures set out under 'Allegations Made Against Professionals' (allegations of abuse by teachers and other staff) on the [Derbyshire & Derby City Safeguarding Procedures](#)

If a member of staff has concerns about another member of staff, then this will be referred to the Head teacher/Principal. Where there are concerns about the Head teacher or Principal this will be referred to the Chair of Governors. We will ensure that all allegations are discussed with the Local Authority Designated Lead (LADO) in every case using the [Derby and Derbyshire LADO referral form](#) and this is done by an appropriate member of the Senior Management Team.

*A hard copy of the LADO referral form can be found in the safeguarding reference file.*

Alternatively you can request a hard copy from Derby Child Protection Admin Team by phoning 01332 642376 or emailing [cypsafeguarding@derby.gov.uk](mailto:cypsafeguarding@derby.gov.uk) or from Derbyshire Professional

Allegations Team by phoning 01629 531299 or emailing  
[Professional.Allegations@Derbyshire.gov.uk](mailto:Professional.Allegations@Derbyshire.gov.uk).

Further guidance including a flowchart can be found in Appendix D

The school/college will ensure we have followed all the necessary duties and processes under this process and under Whistle Blowing and this will be undertaken in accordance with guidance's.

Where there are allegations that are substantiated, the School/College will fully ensure any specific actions are undertaken on management and exit arrangements as outlined in the

[Keeping Children Safe in Education statutory Guidance for schools/colleges](#)

[Derby City & Derbyshire safeguarding Board Procedures](#)

## 5.6 Important contact details

### Starting Point:

Tel: 01629 533 190

24/7, 365 days per week Derbyshire contact and referral service for concerns that a child is suffering or at risk of significant harm.

All other requests for support for children and their families use an on line referral form  
[www.derbyshire.gov.uk/startingpoint](http://www.derbyshire.gov.uk/startingpoint)

**Call Derbyshire (Derbyshire adults 18+):** Tel: 01629 533 190

**LADO (Local Authority Designated Officer) :** [Professional.Allegations@derbyshire.gov.uk](mailto:Professional.Allegations@derbyshire.gov.uk)

**Police Non Emergencies:** 101

**DfE-** one single access web link to access all local authority's reporting webpage or phone number for any concerns/worries about a child, young person and vulnerable adults  
[Report Child Abuse](https://www.gov.uk/report-child-abuse) ( <https://www.gov.uk/report-child-abuse>)

Child Sexual Abuse

CEOP:

NSPCC - National Helpline:

Tel: 0808 800 5000

Childline:

Tel: 0800 11 11

### Prevent:

Seamus Carroll is the lead officer for Prevent at Derbyshire County Council

Email: - [seamus.carroll@derbyshire.gov.uk](mailto:seamus.carroll@derbyshire.gov.uk)

Tel: 01629 538494

Mobile: 07771 980107

Derbyshire Police 101- can route non urgent referrals through to the PREVENT Team

As Dame Catherine Harpur's School and Nursery borders on other Local Authorities, the links below to other Safeguarding Boards may be needed.

**Nottinghamshire** <https://www.nottinghamshire.gov.uk/care/childrens-social-care/nottinghamshire-children-and-families-alliance/pathway-to-provision/multi-agency-safeguarding-hub-mash>

telephone: 0300 500 80 90

fax: 01623 483295

email:[mash.safeguarding@secure.nottsc.gov.uk](mailto:mash.safeguarding@secure.nottsc.gov.uk)

**Nottingham** <https://www.nottinghamcity.gov.uk/children-and-families/children-and-families-direct/>

[candf.direct@nottinghamcity.gcsx.gov.uk](mailto:candf.direct@nottinghamcity.gcsx.gov.uk)

**Tel: 0115 876 4800**

**Leicestershire** <https://www.leicestershire.gov.uk/leisure-and-community/community-safety/report-abuse-or-neglect-of-a-child>

## 6 Management of the Policy

The Governing Body/Proprietor/Trustee will;

- Ensure all governors are effective in the management of safeguarding;
- Ensure all Staff including all other governors and volunteers read and have access to the policy
- That it is displayed on the school's/college's website
- That is overseen to ensure its implementation
- Review its content on an annual basis.

The Head Teacher/ Principal will report annually on Safeguarding activity and progress within the School/Educational setting to the Governing Body.

An appointed Designated Safeguarding Lead will complete the S175 Safeguarding Audit and with an Action Plan which will be used to report on Safeguarding activity and progress. A copy of which will be submitted to the CPM for Schools / Education settings at Derbyshire County Council. This will be held on file & reported to the Derbyshire Safeguarding Children's Board.

The Head Teacher/Principal should report any significant issues to the Chair of the Governing Body that may have an impact on Safeguarding in the School/Educational setting and using the processes with the Local Authority to report.

**Signed by:**

Proprietor/ Chair of Governors

Head Teacher

Date:

Date:

## Appendix 1 : Learning from Serious Case Reviews (SCRs) and Serious Incident Learning Reviews (SILRs)

Derbyshire Safeguarding Children Board recognises the importance of learning and improving from our experiences in this area. A range of learning and themes from SCRs and SILRs have been identified from our most recent reviews, and from the preceding years.

In 2012 we have learnt that:

**Babies** are particularly at risk from abuse and neglect including:

- Shaking
- Co-sleeping
- Domestic abuse
- Methadone used as a soother
- Lack of ante-natal assessment

**Teenagers** - a quarter of all SCRs/SILRs have been about the serious injury or death of a teenager.

Issues include:

- Suicide/self-harm
- Child sexual exploitation (CSE)
- Offending behaviour
- Missing from school, home or care
- Difficult to engage

**Parents**- the death or serious injury of children and young people often has contributory factors including:

- Substance misuse
- Mental health
- Domestic abuse
- Hostility/non-engagement
- Disguised compliance
- Violent men

It is vital that themes and learning is shared across all agencies to improve practice and increase safeguards to children and young people. The SCR subcommittee has identified a number of practice developments for professionals including:



- Information gathering, sharing and recording.
- Assessing the complete circumstances of the child and family, including their history.
- Critically analysing all information.
- Ensuring the needs of the child are paramount above those of the parents.
- Seeing a child at home and where they sleep.

In 2013/2014 in summary form we learnt that:

Common Themes:

- Domestic Abuse
- Substance Misuse
- Vulnerabilities of older teenage children
- Suicide/self-harm
- Shaken babies/youngsters
- Disguised compliance from parents/carers
- Agencies should be consulted before closing cases
- Risk to children should be assessed when in contact with perpetrators of domestic abuse
- Not to have overoptimistic or unrealistic expectations of improvements seen or made as it is not likely reflective of past or current risk

In 2016/17 in summary form we learnt that:

- The importance of authoritative practice;
- To be alert to disguised compliance;
- The importance of professional curiosity;
- To be alert to the possibility of abuse;
- That all professionals to consider the need for an Early Help Assessment;
- Hear the voice of the child;
- Understand and record the child's lived experience.

Learning for Schools from SCR's and Serious Incident Learning Reviews (SIR's)

- Appropriate representation is needed at key meetings- Child Protection Case Conferences
- Effective multi-agency working
- Working more SMART (ly) with children and Young people
- Effective information sharing to inform assessments
- Staff to be curious, inquisitive and ask more questions
- Reflection and constructive challenge for staff when working with vulnerable children and young people
- Staff to observe safer working practices
- Staff to be reminded of a code of conduct and staff to operate by one

From SCR's (East Midlands & wider) in 2015 in summary form we need:

- A requirement for holistic & family based approach to ante-natal care and the importance of recording a full history of parents
- A need for professional curiosity into parental capacity & the mental health of parents
- To find out about the role of fathers/male partners/boyfriends in families
- To understand how mental health issues impact on the welfare & development of young children
- To act upon disrupted education, going missing, school refusal
- To know about the need to distinguish between sexual abuse, sexual exploitation , and or/underage sexual activity
- To identify neglect in disabled children
- A requirement to know about and use escalation & challenge processes provided by a safeguarding board where there are professional disagreements
- To know that when safeguarding teenagers understanding a tension between respecting their autonomy and keeping them safe
- To understand the impact of bereavement, loss and transition for children and especially young people
- Realise and respond to parents who dominate and manipulate TAF meetings (early help/CIN) by disputing points, creating diversions & feigned compliances with recommendations.

**Relevant SCRs:**

Serious Case Reviews, Serious Incident Learning and Thematic Case Reviews and learning relevant for schools /colleges can be found on the [Derbyshire Safeguarding Childrens Board](#) website

## APPENDIX 2

### Schools which have EYFS children in nursery or reception classes

Please note that the requirements below **only** relate to the welfare and safeguarding requirements of the EYFS (0-5 years). The learning and development requirements must also be met in full.

*(Include this appendix therefore only if this applies to your setting)*

- **Schools are not required to have separate policies to cover EYFS requirements provided the requirements are already met through an existing policy.**
- These policies and procedures should be recorded in writing.

### EYFS welfare and safeguarding requirements - policies and procedures:

Source: Early Years Foundation Stage Statutory Framework (revised 2017) and Ofsted's Inspecting safeguarding in early years, education and skills settings (2016)

<p><b>Child Protection</b></p>	<p>3.4 – 3-8 (see above)</p>	<p>The safeguarding policy and procedures <b>must</b> include:</p> <ul style="list-style-type: none"> <li>• an allegation being made against a member of staff (This is included in this schools overarching model child protection &amp; safeguarding policy)</li> <li>• the use of mobile phones and cameras in the setting (<i>refer here to the guidance where this is clear and explained in your school and additional guidelines expected in nurseries around use of cameras on premises</i>)</li> </ul>
<p>Suitable person</p>	<p>3.9 - 3.13</p>	<p>Providers <b>must</b> tell staff that they are expected to disclose any convictions, cautions, court orders, reprimands and warnings that may affect their suitability to work with children (whether received before or during their employment at the setting). This is explained in more detail in our overarching model child protection &amp; safeguarding policy.</p> <p>Providers <b>must</b> also meet their responsibilities under the Safeguarding</p>

		<p>Vulnerable Groups Act 2006, which includes a duty to make a referral to the Disclosure and Barring Service where a member of staff is dismissed (or would have been, had the person not left the setting first) because they have harmed a child or put a child at risk of harm. This is explained in more detail in our overarching model child protection &amp; safeguarding policy.</p>
<p>Disqualification</p>	<p>3.14 - 3.18</p>	<p>A provider or a childcare worker may be disqualified from registration. Where a person is disqualified, the provider must not employ that person in connection with early years provision. Where an employer becomes aware of relevant information that may lead to disqualification of an employee, the provider must take appropriate action to ensure the safety of children.</p> <p>A provider or a childcare worker may also be disqualified because they live in the same household as another person who is disqualified, or because they live in the same household where a disqualified person is employed.</p> <p>The information <b>must</b> be provided to Ofsted as soon as reasonably practicable, but at the latest within 14 days of the date the provider became aware of the information or ought reasonably to have become aware of it if they had made reasonable enquiries.</p>
<p>Staff taking medication/other substances</p>	<p>3.19</p>	<p>If practitioners are taking medication which may affect their ability to care for children, those practitioners should seek medical advice.</p> <p>Providers <b>must</b> ensure that those practitioners only work directly with children if medical advice confirms that the medication is unlikely to impair that staff member's ability to look after children</p>

		properly. Staff medication on the premises must be securely stored, and out of reach of children, at all times.
<b>Staff qualifications, training, support and skills</b>	3.20 – 3.26	Induction training must include information about emergency evacuation <u>procedures</u> , safeguarding, child protection, and health and safety.
Key person	3.27 –	Each child <b>must</b> be assigned a key person. Their role is to help ensure that every child's care is tailored to meet their individual needs to help the child become familiar with the setting, offer a settled relationship for the child and build a relationship with their parents. In schools this will often be the teacher.
Staff: child ratios –	3.28 – 3.43	<p>Providers <b>must</b> inform parents and/or carers about staff deployment, and, when relevant and practical, aim to involve them in these decisions. Children must usually be within sight and hearing of staff and always within sight or hearing.</p> <p>Only those aged 17 or over may be included in ratios (and staff under 17 should be supervised at all times). Students on long term placements and volunteers (aged 17 or over) and staff working as apprentices in early education (aged 16 or over) may be included in the ratios if the provider is satisfied that they are competent and responsible.</p> <p>The ratio and qualification requirements below apply to the total number of staff available to work directly with children.</p> <p><b>For children aged two:</b></p> <ul style="list-style-type: none"> <li>• there must be at least one member of staff for every four children</li> <li>• at least one member of staff must hold a full and relevant level 3 qualification</li> <li>• at least half of all other staff must hold a full and relevant level 2 qualification</li> </ul>

	<p><b>For children aged three and over in maintained nursery schools and nursery classes in maintained schools:</b></p> <ul style="list-style-type: none"> <li>• there <b>must</b> be at least one member of staff for every 13 children</li> <li>• at least one member of staff must be a school teacher as defined by section 122 of the Education Act 2002</li> <li>• at least one other member of staff must hold a full and relevant level 3 qualification</li> </ul> <p><b>Reception classes</b> in maintained schools and academies are subject to infant class size legislation. The School Admissions (Infant Class Size) Regulations 2012 limit the size of infant classes to 30 pupils per school teacher (subject to permitted exceptions) while an ordinary teaching session is conducted. 'School teachers' do not include teaching assistants, higher level teaching assistants or other support staff.</p> <p><b>Where schools have provision run by the governing body (under section 27 of the Education Act 2002) for three- and four-year-olds</b> who are not pupils of the school, they can apply: a 1:13 ratio where a person with a suitable level 6 qualification is working directly with the children; or a 1:8 ratio where a person with a suitable level 6 qualification is not working directly with children but at least one member of staff present holds a level 3 qualification.</p> <p><b>Where children in nursery classes attend school for longer than the school day or in the school holidays, in provision run directly by the governing body</b> or the proprietor, with no teacher present, a ratio of one member of staff to every eight children can be applied if at least one member of staff holds a full and relevant</p>
--	---

		<p>level 3 qualification, and at least half of all other staff hold a full and relevant level 2 qualification.</p> <p>Some schools may choose to <b>mix their reception classes with groups of younger children</b> (nursery pupils, none pupils or younger children from a registered provider), in which case they must determine ratios within mixed groups, guided by all relevant ratio requirements and by the needs of individual children within the group. In exercising this discretion, the school must comply with the statutory requirements relating to the education of children of compulsory school age and infant class sizes. Schools' partner providers must meet the relevant ratio requirements for their provision.</p> <p>Where the provision is solely before/after school care or holiday provision for children who normally attend Reception class (or older) during the school day, there must be sufficient staff as for a class of 30 children. It is for providers to determine how many staff are needed to ensure the safety and welfare of children, bearing in mind the type(s) of activity and the age and needs of the children. It is also for providers to determine what qualifications, if any, the manager and/or staff should have.</p>
<p><b>Health</b></p>	<p>3.44 – 3.46</p>	<p>Schools <b>must</b> have a procedure, discussed with parents and/or carers, for responding to children who are ill or infectious, take necessary steps to prevent the spread of infection, and take appropriate action if children are ill. Providers <b>must</b> have and implement a policy and procedures, for administering medicines.</p>

<p><b>Food and drink</b></p>	<p>3.37 - 3.49</p>	<p>Where children are provided with meals, snacks and drinks, they <b>must</b> be healthy, balanced and nutritious. Before a child is admitted to the setting the provider must also obtain information about any special dietary requirements, preferences and food allergies that the child has, and any special health requirements. Fresh drinking water must be available and accessible at all times. Providers must record and act on information from parents and carers about a child's dietary needs.</p> <p>There <b>must</b> be an area which is adequately equipped to provide healthy meals, snacks and drinks for children as necessary. There must be suitable facilities for the hygienic preparation of food for children. Providers must be confident that those responsible for preparing and handling food are competent to do so. In group provision, all staff involved in preparing and handling food must receive training in food hygiene.</p> <p>Registered providers must notify Ofsted of any food poisoning affecting two or more children cared for on the premises.</p>
<p>Accident or injury</p>	<p>3.50 – 3.51</p>	<p>Registered providers must notify Ofsted of any serious accident, illness or injury to, or death of, any child while in their care, and of the action taken. Notification must be made as soon as is reasonably practicable, but in any event within 14 days of the incident occurring. A registered provider, who, without reasonable excuse, fails to comply with this requirement, commits an offence. Providers must notify local child protection agencies of any serious accident or injury to, or the death of, any child while in their care, and must act on any advice from those agencies.</p>
<p>Smoking</p>	<p>3.56</p>	<p>Wider legislation <b>must</b> be met (i.e. signage and no smoking in cars with children)</p>
<p><b>Premises</b></p>		



Risk assessment	3.64	Risk assessments should identify aspects of the environment that need to be checked on a regular basis, when and by whom those aspects will be checked, and how the risk will be removed or minimised.
Outings	3.65 – 3.66	A trained paediatric first aider must be available on all trips.
Special educational need	3.67 - 3.68	No policy requirement stated – however in ‘Inspecting safeguarding in early years, education and skills settings’ document this must be in the child protection policy – see bottom of page.
Information and records	3.68 – 3.71	Providers <b>must</b> enable a regular two-way flow of information with parents and/or carers, and between providers, if a child is attending more than one setting. If requested, providers should incorporate parents’ and/or carers’ comments into children’s records.
Information about the child	3.72	No policy requirement stated
<b>Information for parents and carers</b>	3.73	<u>Details of the provider's policies and procedures</u> should be published and they must make <u>copies available on request</u> , including the procedure to be followed in the event of a parent and/or carer <u>failing to collect a child</u> at the appointed time, or in the event of a <u>child going missing</u> at, or away from, the setting.
<b>Complaints</b>	3.74 – 3.75	Providers must put in place a <u>written procedure for dealing with concerns and complaints</u> from parents and/or carers, and must keep a written record of any complaints, and their outcome.
Changes that must be notified to Ofsted	3.77 – 3.78	All registered early years providers <b>must</b> notify Ofsted of any change: <ul style="list-style-type: none"> <li>• in the address of the premises (and seek approval to operate from those premises where appropriate); to the premises which may affect the space available to children</li> </ul>

		<p>and the quality of childcare available to them</p> <ul style="list-style-type: none"> <li>• any proposal to change the hours during which childcare is provided;</li> <li>• any significant event which is likely to affect the suitability of the early years provider or any person who cares for, or is in regular contact with, children on the premises to look after children</li> <li>• where the early years provision is provided by a company, any change in the name or registered number of the company</li> <li>• where the childcare is provided by a partnership, body corporate or unincorporated association, any change to the 'nominated individual'</li> <li>• where the childcare is provided by a partnership, body corporate or unincorporated association whose sole or main purpose is the provision of childcare, any change to the individuals who are partners in, or a director, secretary or other officer or members of its governing body</li> </ul>
--	--	---

**Inspecting safeguarding in early years, education and skills settings – Ofsted 2016**

Page 10	<ul style="list-style-type: none"> <li>• the child protection <u>policy</u> reflects the additional barriers that exist when recognising the signs of abuse and neglect of children who have <u>special educational needs and/or disabilities</u></li> </ul>
Page 9	<ul style="list-style-type: none"> <li>• All staff and carers have a copy of and understand the <u>written procedures</u> for managing allegations of harm to a child or learner. They know how to make a complaint and understand policies on whistleblowing and how to manage other concerns about the practice of adults in respect of the safety and protection of children and learners. This is explained in more detail in our school overarching child protection &amp; safeguarding policy.</li> </ul>

Source:-

**DfE Statutory Framework for the Early Years Foundation Stage 2017**

**DfE Inspecting Safeguarding in Early Years Education & Skills - (updated August 2016)**

**Appendix 3 Dame Catherine Harpur's safeguarding incident / concern recording sheet**

**Safeguarding incident/concern recording sheet**

<b>Name of Child</b>	
<b>Name of adult reporting</b>	
<b>Date recorded</b>	
<b>Date of incident (if applicable)</b>	
<b>Nature of concern</b> PLEASE PROVIDE AS MUCH DETAIL AS POSSIBLE.	

<b>Actions taken</b>	
<b>Outcome</b> (to be completed by the lead safeguarding officer)	

**GUIDANCE:**

Any member of the staff, including volunteers, must record any concerns about a child or young person.

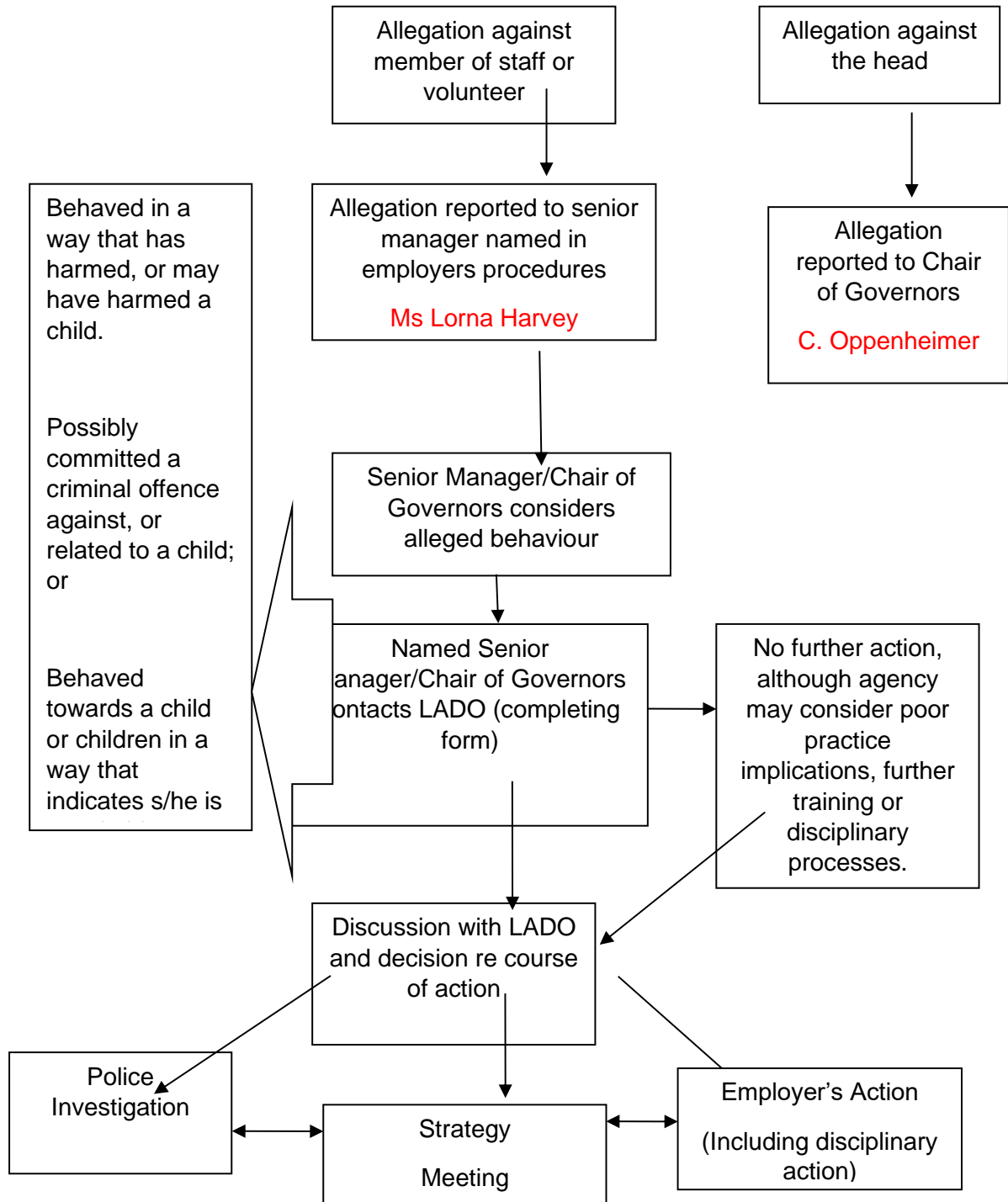
- This form must be completed as soon as possible after the discovery of the concern and be handed to Lorna Harvey the Designated Safeguarding Lead (DSL) or Fay Younger (Deputy DSL) in her absence.
- If the concerns are immediate, please tell the Designated Safeguarding Lead (DSL) straight away.

In the event of a disclosure, all staff and students should behave in the following way:

- Stay calm;
- Do not press for information by questioning the individual. Encourage the person to talk, listen and remember what they say;
- Do not express disbelief, anger, embarrassment, shock or fear;
- Reassure the individual and tell them you are glad they are speaking to you and that you know it is not their fault;
- Never promise to keep a secret;
- When appropriate write down what has happened on the safeguarding incident form and where possible, recount any conversations verbatim;
- Inform your DSL at the earliest opportunity and hand in this form to them.

PLEASE NOTE – THE DETAILS RECORDED IN THIS FORM WILL BE STORED IN A CONFIDENTIAL FILE. DETAILS INCLUDED IN THIS RECORDING SHEET WILL ONLY BE SHARED WHEN NECESSARY FOR THE PROTECTION ON THE INDIVIDUAL.

## Appendix 4 : Managing Allegations Against Staff and Volunteers



LADO tracks progress, monitors outcomes and reports to LSCB and DfE

### **Allegations involving a member of staff / volunteer**

This school is committed to having effective recruitment and human resources procedures, including checking all staff and volunteers to make sure they are safe to work with children and young people. Key staff involved in recruitment processes will undertake Safer Recruitment Training.

However, there may still be occasions when there is an allegation against a member of staff or volunteer. Allegations against those who work with children, whether in a paid or unpaid capacity, cover a wide range of circumstances

All allegations of abuse of children by those who work with children or care for them must be taken seriously. In these circumstances all allegations against other members of staff or volunteers should be referred to the Headteacher. In their absence you should seek to speak with a member of staff from the Senior Leadership Team. If your concern is about the Headteacher, you need to speak to the Chair of Governors. Information sharing should not be barrier but in the unlikely event that you cannot access the people above please discuss your concerns with the Local Authority Designated Officer (LADO.)

The following procedure should be applied in all situations where it is alleged that a person who works with children has:

- Behaved in a way which has harmed a child, or may have harmed a child
- Possibly committed a criminal offence against or related to a child
- Behaved towards a child or children in a way which indicates that he/she is unsuitable to work with children

The allegations may relate to the persons behaviour at work, at home or in another setting.

The LADO will discuss the matter with the Headteacher /Chair to determine what steps should be taken and where necessary obtain further details of the allegation and the circumstances in which it was made. The discussion should also consider whether there is evidence/information that establishes that the allegation is false or unfounded, whether a referral to the Children's Social Care Services is required and/or whether disciplinary action is appropriate.

Common sense and judgement must be applied in reaching a decision about what action to take.

## Appendix 5 Body maps

### **Medical assistance and first aid should be sought where this is required.**

All concerns and actions must be recorded using the concerns form or other safeguarding recording systems in use within the setting.

Body Maps should be used to document and illustrate visible signs of harm and physical injuries. They must be completed at time of observation using a black pen; correction fluid or any other eraser should not be used.

### **Do not:**

- **Remove or lift clothing** for the purpose of the examination unless the injury site is freely available because of treatment. Record any visible injuries or ask the child/young person to point to where else it is sore/hurts. Or;
- **Take photos of injuries.** If photos of injuries are required for evidence purposes then this should be done by the Police.

When you notice an injury to a child, try to record the following information in respect of each mark identified e.g. red areas, swelling, bruising, cuts, lacerations and wounds, scalds and burns:

- Exact site of injury on the body, e.g. upper outer arm/left cheek
- Size of injury - in appropriate centimetres or inches
- Approximate shape of injury, e.g. round/square or straight line
- Colour of injury - if more than one colour, say so
- Is the skin broken?
- Is there any swelling at the site of the injury, or elsewhere?
- Is there a scab/any blistering/any bleeding?
- Is the injury clean or is there grit/fluff etc.?
- Is mobility restricted as a result of the injury?
- Does the site of the injury feel hot?
- Does the child feel hot?
- Does the child feel pain?
- Has the child's body shape changed/are they holding themselves differently?

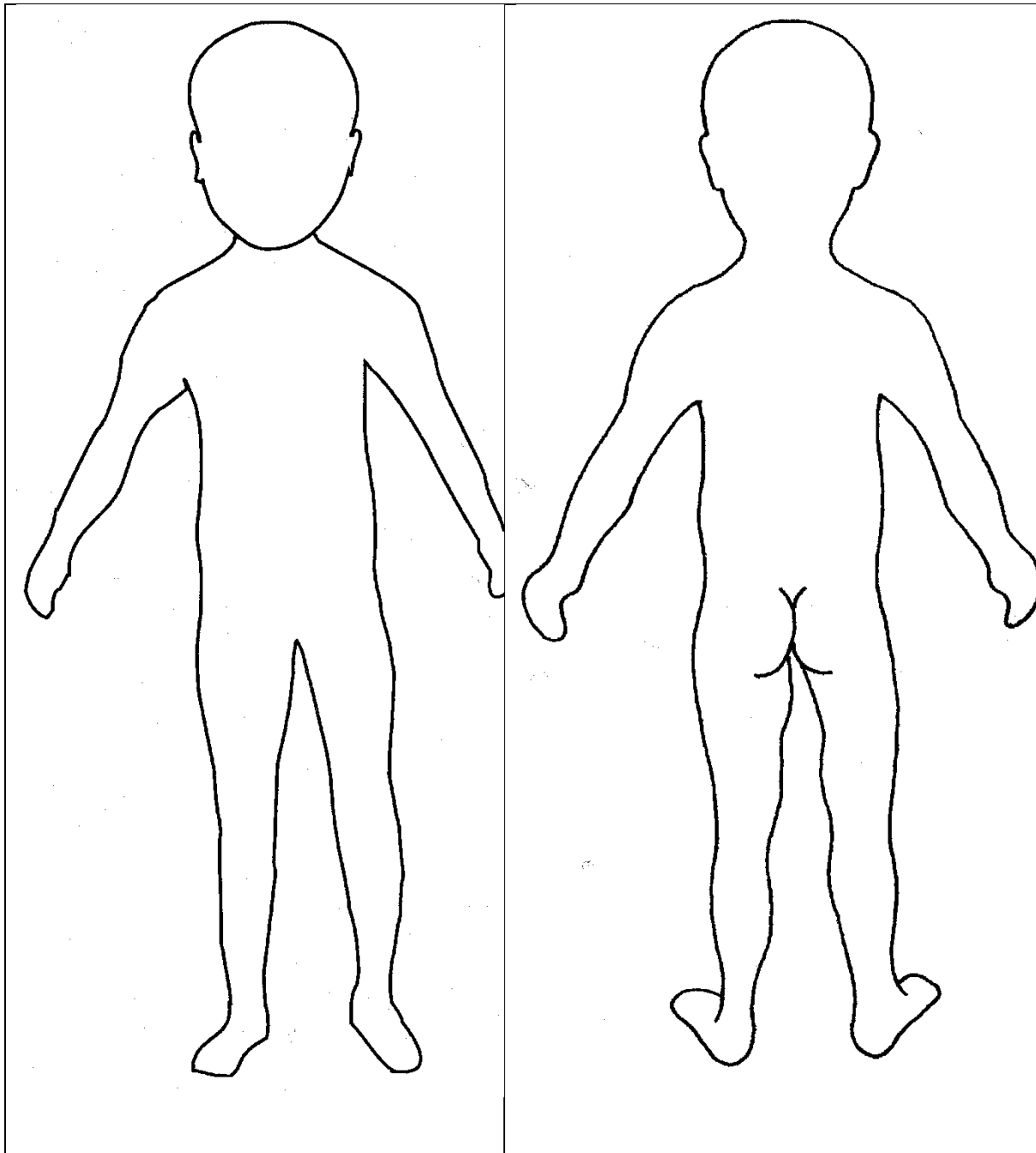
Importantly the date and time of the recording must be stated as well as the name and designation of the person making the record. Add any further comments as required.

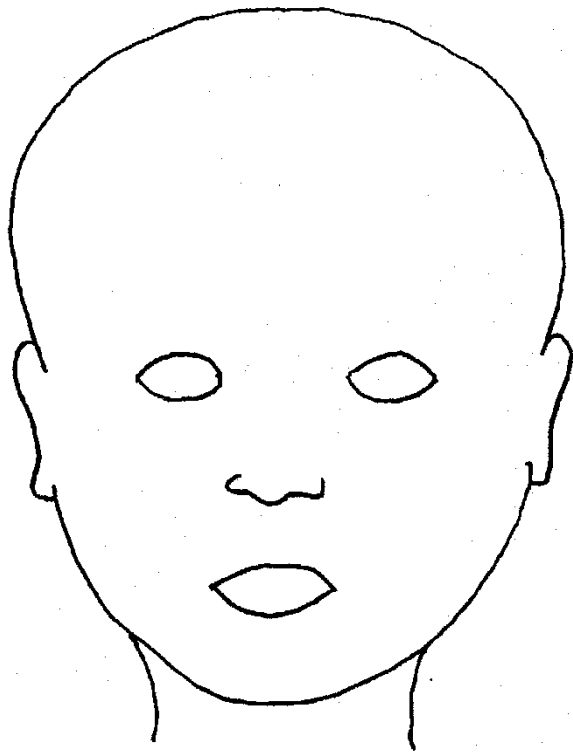
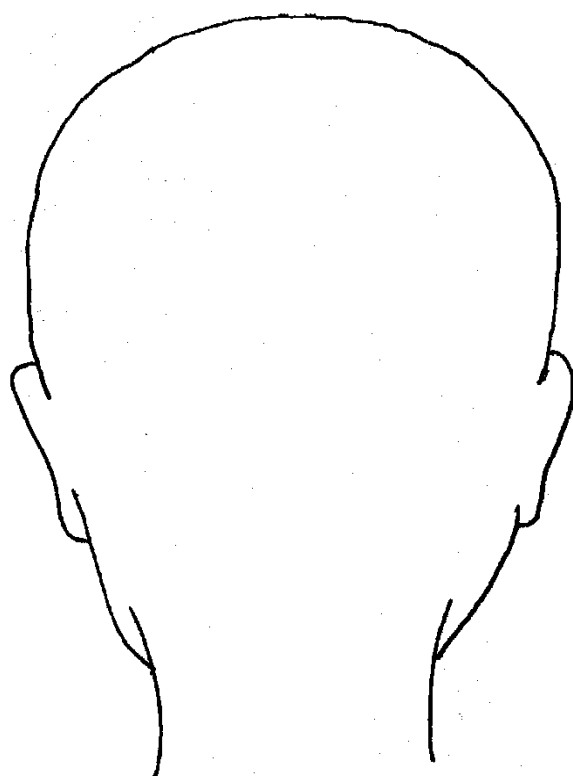
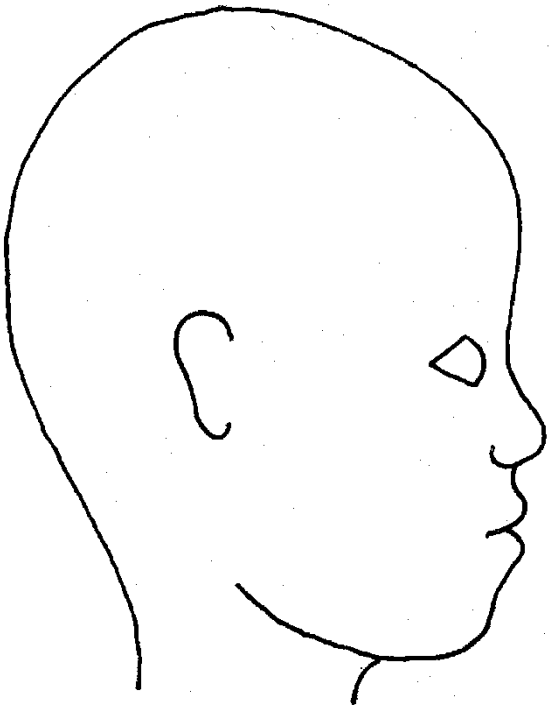
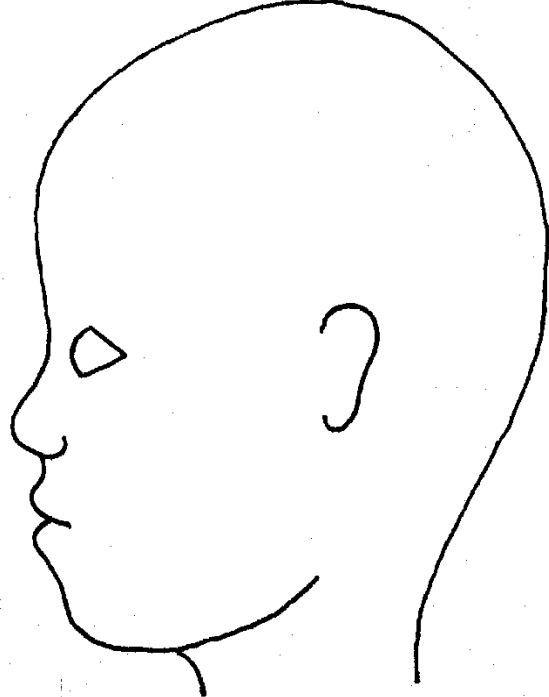
A copy of the body map should be kept on the child/young person's safeguarding/child protection file.

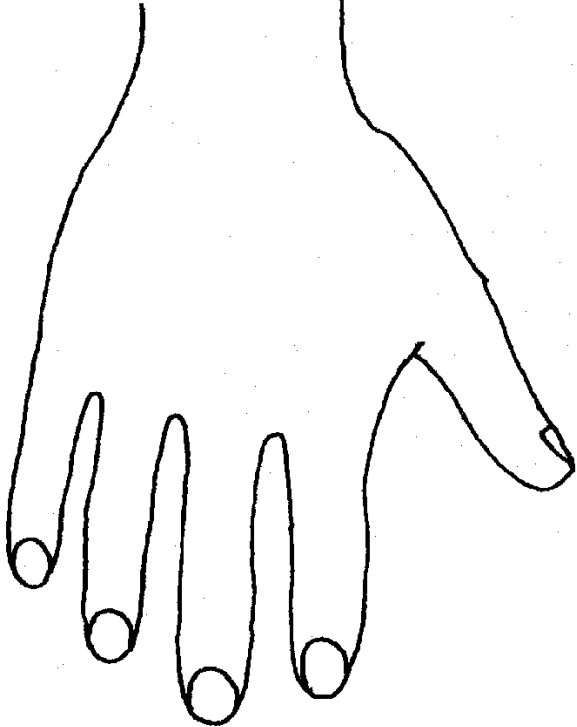
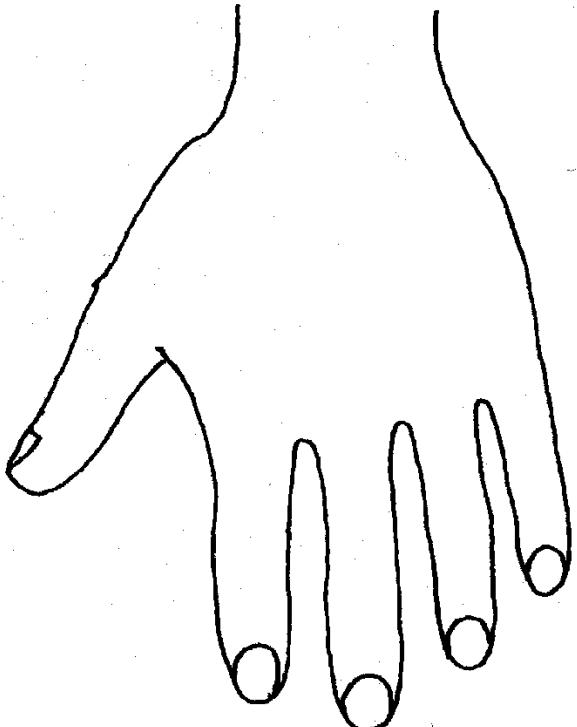




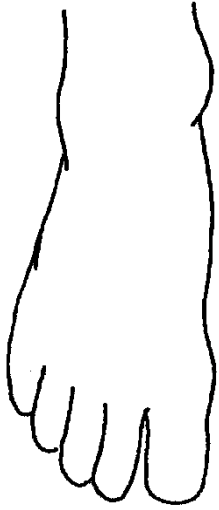

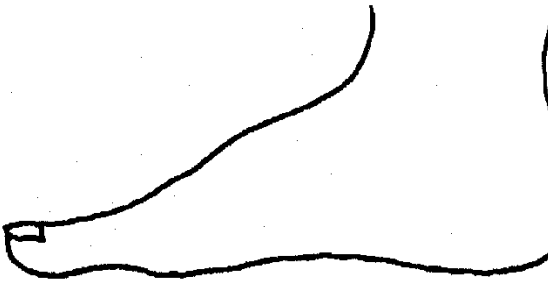
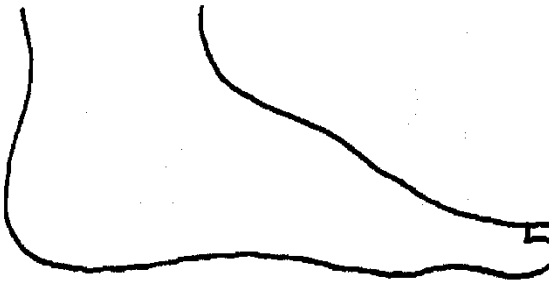


### Body Map

<b>Name of Child:</b>		<b>Date of Birth:</b>	
<b>Name of person completing the Body Map:</b>		<b>Role:</b>	
<b>Date and time of observation:</b>			



Name of Child:		Date/time of observation:	
			
<b>FRONT</b>	<b>BACK</b>		
			
<b>RIGHT</b>	<b>LEFT</b>		

<b>Name of Child:</b>		<b>Date/time of observation:</b>	
			
<b>RIGHT</b>		<b>LEFT</b>	
<b>BACK</b>			
			
<b>RIGHT</b>		<b>LEFT</b>	
<b>PALM</b>			

<b>Name of Child:</b>						<b>Date/time of observation:</b>					
											
<b>RIGHT</b>		<b>TOP</b>		<b>LEFT</b>		<b>RIGHT</b>		<b>BOTTOM</b>		<b>LEFT</b>	
											
<b>RIGHT</b>						<b>LEFT</b>					
<b>INNER</b>											
											
<b>RIGHT</b>						<b>LEFT</b>					
<b>OUTER</b>											

<b>Printed name</b>		<b>Date:</b>	
<b>Signature</b>		<b>Time:</b>	

## Appendix 6 - CHILDREN IN SPECIFIC CIRCUMSTANCES - Additional advice and support

Abuse or Safeguarding issue	Link to Guidance/Advice	Source
Abuse	What to do if you're worried a child is being abused	DfE advice
	Domestic abuse: Various Information/Guidance	Home Office
	Faith based abuse: National Action Plan	DfE advice
	Relationship abuse: disrespect nobody	Home Office website
Bullying	Preventing bullying including cyberbullying	DfE advice
Children and the courts	Advice for 5-11-year olds witnesses in criminal courts	MoJ advice
	Advice for 12-17 year old witnesses in criminal courts	MoJ advice
Children missing from education, home or care	Children missing education	DfE statutory guidance
	Child missing from home or care	DfE statutory guidance
	Children and adults missing strategy	Home Office strategy
Children with family members in prison	National Information Centre on Children of Offenders	Barnardo's in partnership with Her Majesty's Prison and Probation Service (HMPPS) advice
Child exploitation	County Lines: criminal exploitation of children and vulnerable adults	Home Office guidance
	Child sexual exploitation: guide for practitioners	DfE
	Trafficking: safeguarding children	DfE and HO guidance
Drugs	Drugs-advice for schools	DfE and ACPO advice
	Drug strategy 2017	Home Office strategy
	Information and advice on drugs	Talk to Frank website
	ADEPIS platform sharing information and resources for schools: covering drug (& alcohol) prevention	Website developed by Mentor UK

"Honour Based Violence" (so called)	Female genital mutilation: information and resources	Home Office
	Female genital mutilation: multi agency statutory guidance	DfE, DH, and HO statutory guidance
	Forced marriage: information and practice guidelines	Foreign Commonwealth Office and Home Office
Health and Well-being	Fabricated or induced illness: safeguarding children	DfE, Department for Health and Home Office
	Rise Above: Free PSHE resources on health, wellbeing and resilience	Public Health England resources
	Medical-conditions: supporting pupils at school	DfE statutory guidance
	Mental health and behaviour	DfE advice
Homelessness	Homelessness: How local authorities should exercise their functions	HCLG
Online	Sexting: responding to incidents and safeguarding children	UK Council for Child Internet Safety
Private fostering	Private fostering: local authorities	DfE - statutory guidance
Radicalisation	Prevent duty guidance	Home Office guidance
	Prevent duty advice for schools	DfE advice
	Educate Against Hate Website	DfE and Home Office
Violence	Gangs and youth violence: for schools and colleges	Home Office advice
	Ending violence against women and girls 2016-2020 strategy	Home Office strategy
	Violence against women and girls: national statement of expectations for victims	Home Office guidance
	Sexual violence and sexual harassment between children in schools and colleges	DfE advice
	Serious violence strategy	Home Office Strategy

## Appendix 7 : Domestic Abuse, including Female Genital Mutilation (FGM), so called 'Honour Based Violence' (HBV) and Forced Marriage.

### Domestic Abuse

The cross-government definition of domestic violence and abuse is: *'any incident or pattern of incidents of controlling, coercive, threatening behaviour, violence or abuse between those aged 16 or over who are, or have been, intimate partners or family members regardless of gender or sexuality. The abuse can encompass, but is not limited to:*

- *psychological*
- *physical*
- *sexual*
- *financial*
- *emotional'*

### Controlling behaviour

Controlling behaviour is a range of acts designed to make a person subordinate and/or dependent by isolating them from sources of support, exploiting their resources and capacities for personal gain, depriving them of the means needed for independence, resistance and escape and regulating their everyday behaviour.

### Coercive behaviour

Coercive behaviour is an act or a pattern of acts of assault, threats, humiliation and intimidation or other abuse that is used to harm, punish, or frighten their victim.

Domestic abuse is a crime and should be reported to the Police. Children may suffer both directly and indirectly if they live in households where there is domestic abuse. Domestic abuse is likely to have a damaging effect on the health and development of children.

Children living in families where they are exposed to abuse have been shown to be at risk of behavioural, emotional, physical, cognitive functioning, attitudes and long term developmental problems. Incidents of domestic abuse towards pregnant women are associated with poor obstetric outcomes in a number of ways, such as increased rates of miscarriage, premature birth, low birth weight, foetal injury and foetal death.

### Forced Marriage and 'Honour Based' Violence

A forced marriage is where one or both people do not (or in cases of people with learning disabilities, cannot) consent to the marriage and pressure or abuse is used. It is recognised in the UK as a form of domestic and/or sexual violence against women and men, and a serious abuse of human rights. Where it affects children and young people it is child abuse. Disabled children and young people are vulnerable to forced marriage.

The pressure put on people to marry against their will can be physical (including threats, actual physical violence and sexual violence) or emotional and psychological (for example, when someone is made to feel like they're bringing shame on their family). Financial abuse can also be a factor.

A clear distinction must be made between forced marriage and arranged marriage. In arranged marriages, the families of both spouses take a leading role in choosing the marriage partner, but the choice whether or not to accept the arrangements remains with the individual. Consent must be from both parties.

Honour based violence (HBV) can be described as a collection of practices, which are used to control behaviour within families or other social groups to protect perceived cultural and religious beliefs and/or honour. Such violence can occur when perpetrators perceive that a relative has shamed the family and/or community by breaking their honour code.

It is a violation of human rights and may be a form of domestic and/or sexual violence. Where it affects children and young people it is child abuse.

HBV manifests itself in a diverse range of ways with children and young people, including forced marriage, domestic and/or sexual violence, rape, physical assaults, harassment, kidnap, threats of violence (including murder), witnessing violence directed towards a sibling or indeed another family member, and female genital mutilation.

### **Female Genital Mutilation**

Female Genital Mutilation (FGM) is a form of child abuse and violence against female children and women, a serious public health concern and a human rights issue.

The World Health Organisation (WHO) defines female genital mutilation as '*all procedures (not operations) which involve partial or total removal of the external female genitalia or injury to the female genital organs whether for cultural or other non-therapeutic reasons.*'

FGM can be carried out at any age and is performed for a variety of complex reasons with a range of explanations and motives given by individuals and families who support the practice. It is medically unnecessary, is extremely painful, terrifying and has life threatening physical and serious psychological health consequences both at the time the procedure is carried out and later in life.

For information about identifying the risk of FGM, including where FGM may be imminent or where FGM has already taken place, see [DSCBs safeguarding children procedures](#); Safeguarding Children at Risk of Abuse Through Female Genital Mutilation (FGM) chapter, section 2. Identifying Female Children and Women at Risk.

**All concerns about domestic abuse, 'honour based' violence, forced marriage and FGM must be reported to the Designated Safeguarding Lead**



Further information about the above issues is located on the [GOV.UK](https://www.gov.uk) and [Derby Safeguarding Children Board](https://www.derby.gov.uk) websites. There are specific [local safeguarding procedures](#) on:

- Domestic Abuse
- Forced marriage, including HBV
- FGM

## Appendix 8 : Privately Fostered Children

### Definition of private fostering

A private fostering arrangement is a private arrangement for a child under the age of 16 (or 18 if they are disabled) to be cared for by someone who is not a parent or close relative for more than 28 days. The Local Authority is not involved in placing the child or young person in this private arrangement.

A child or young person is privately fostered if they are living with extended family members such as cousins, great aunts, great uncles or a family friend. They may be living outside of their parents care due to;

- Child or young person is asked to leave the family home
- Parent is in prison / hospital / homeless
- To avoid becoming a looked after child
- Parent has left the local area and child has remained to complete academic studies
- Child leaves due to family dysfunction or because they have been living with parents who have substance misuse problems or other difficulties
- Parent decides to place child with extended family member
- Child is placed with extended family for religious or economic reasons

### Responsibilities

Private foster carers are responsible for providing the day-to-day care of the child in a way which will promote and safeguard his welfare. However the overarching responsibility remains with the person who has parental responsibility for the child.

The Local Authority has legal duties towards private fostered children / young people and must satisfy itself that welfare of children who are, or will be, privately fostered within their area are satisfactorily safeguarded.

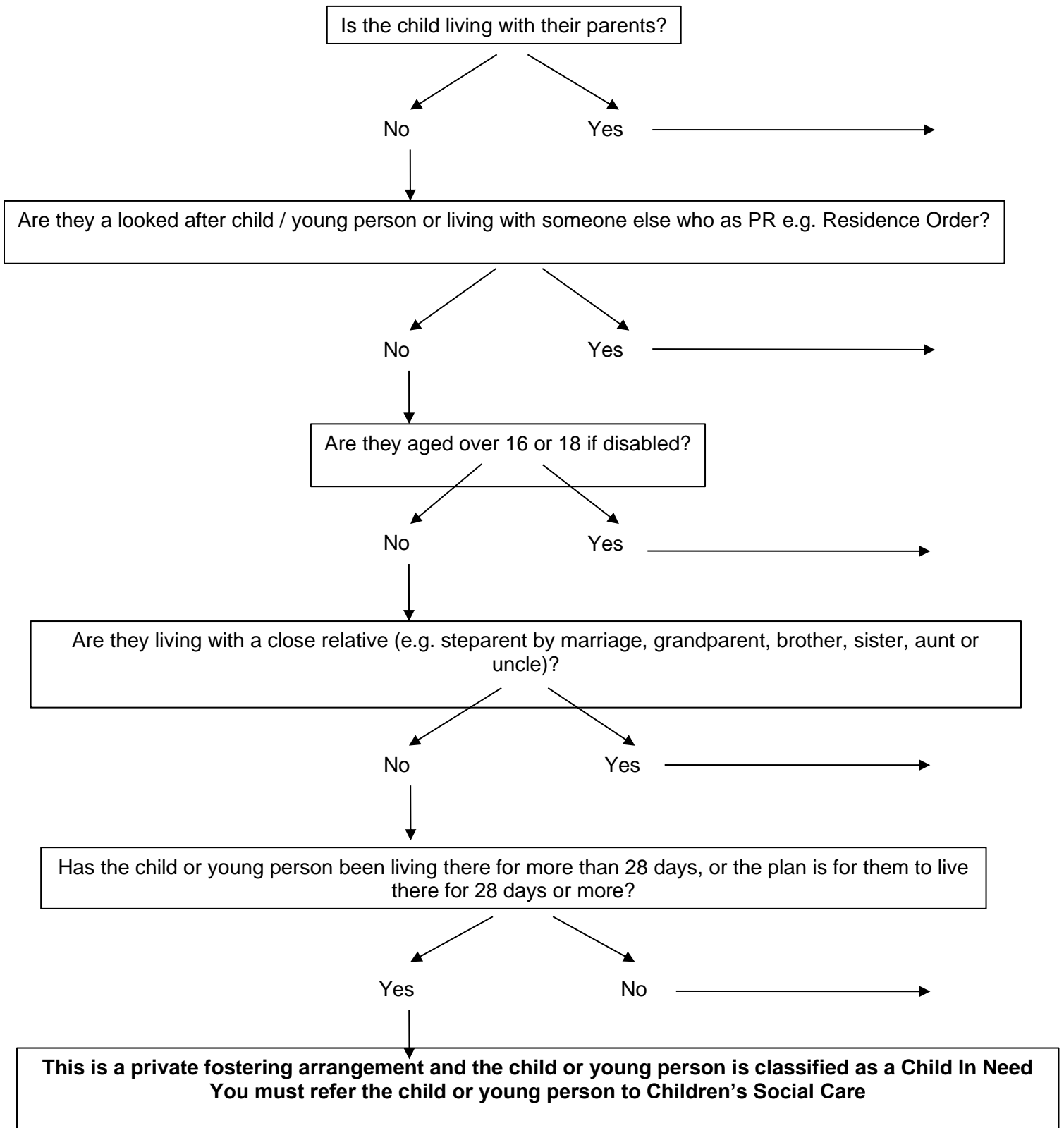
If you or your agency become aware of a child or young person living in a private fostering arrangement you must notify the Local Authority Children's Social Care by telephone in one working day and you will be asked to follow this up in writing. Children's Social Care can be contacted via the First Contact Team, 01332 641172.

For further information about how to make a referral to Children's Social Care, please see the [DSCBs Safeguarding Children procedures](#). These can also be found on the local safeguarding children procedures and guidance page of [www.derbyscb.org.uk](http://www.derbyscb.org.uk).

See Private Fostering flowchart on the following page and [DSCB Private Fostering webpage](#).

**All concerns about private fostering arrangements must be reported to the Designated Safeguarding Lead.**

## Is this a Privately Fostered Child or Young Person?



## Appendix 9 : Radicalisation and Extremism

In order for the school/college to fulfil the Prevent Duty, it is essential that staff are able to identify children who are vulnerable to radicalisation and know what to do when they are identified.

### What is Radicalisation and Extremism?

Radicalisation is defined as the process by a person comes to support terrorism and forms of extremism leading to terrorism. During this process it is possible to intervene to prevent vulnerable people being drawn into terrorist related activity.

Extremism is vocal or active opposition to fundamental British values, including democracy, the rule of law, individual liberty and mutual respect and tolerance of different faiths and beliefs. We also include in our definition of extremism calls for the death of members of our armed forces, whether in this country or overseas. Terrorist groups very often draw on extremist ideas developed by extremist organisations.

*Taken from: [The Prevent Duty – departmental advice for schools and childcare providers](#) )*

### Identification

There is no single way of identifying a child or young person who is likely to be susceptible to radicalisation.

However to issues that may make an individual vulnerable to radicalisation, can include:

- Identity Crisis - distance from cultural / religious heritage and uncomfortable with their place in the society around them;
- Personal Crisis - family tensions; sense of isolation; adolescence; low self-esteem; disassociating from existing friendship group and becoming involved with a new and different group of friends; searching for answers to questions about identity, faith and belonging;
- Personal Circumstances - migration; local community tensions; events affecting country or region of origin; alienation from UK values; having a sense of grievance that is triggered by personal experience of racism or discrimination or aspects of Government policy;
- Unmet aspirations - perceptions of injustice; feeling of failure; rejection of community values;
- Criminality - experiences of imprisonment; previous involvement with criminal groups.

As with managing other safeguarding risks, all staff should be alert to changes in children's behaviour which could indicate they may be in need of help or protection. Children at risk of radicalisation may display different signs or seek to hide their views. Changes may include:

- General changes of mood, patterns of behaviour, secrecy;
- Changes of friends and mode of dress;
- Use of inappropriate language;
- Narrow/limited religious or political view;
- Attendance at certain meetings e.g. rallies and articulating support for;

- "Them" and "us" language/rhetoric;
- Sudden unexplained foreign travel;
- Possession of violent extremist literature;
- The expression of extremist views;
- Advocating violent actions and means;
- Association with known extremists;
- Seeking to recruit others to an extremist ideology.

As with managing other safeguarding risks, staff should be alert to changes in children's behaviour which could indicate they may be in need of help or protection.

**All concerns should be reported to the Designated Safeguarding Lead**

Further information about this issue is located on the DSCB [Extremism and Radicalisation](#) webpage. There are also specific [local safeguarding children procedures](#) about:

- Safeguarding Children and Young People against Radicalisation and Violent Extremism

## Appendix 10 : Seven Golden Rules to Sharing Information

1. **Remember that the Data Protection Act 1998 and human rights law are not barriers to justified information sharing**, but provide a framework to ensure that personal information about living persons is shared appropriately.
2. **Be open and honest** with the individual (and/or their family where appropriate) from the outset about why, what, how and with whom information will, or could be shared, and seek their agreement, unless it is unsafe or inappropriate to do so.
3. **Seek advice** for other practitioners if you are in any doubt about sharing the information concerned, without disclosing the identity of the person where possible.
4. **Share with informed consent where appropriate** and, where possible, respect the wishes of those who do not consent to share confidential information. You may still share information without consent if, in your judgement, there is a good reason to do so, such as where safety may be at risk. You will need to base your judgement on the facts of the case. When you are sharing or requesting personal information from someone, be certain of the basis upon which you are doing so. Where you have consent, be mindful that an individual might not expect information to be shared.
5. **Consider safety and well-being:** Base your information sharing decisions on considerations of the safety and well-being of the individual and others who may be affected by their actions.
6. **Necessary, proportionate, relevant, adequate, accurate, timely and secure:** Ensure that the information you share is necessary for the purpose for which you are sharing it, it shared only with those people who need to have it, is accurate and up-to-date, is shared in a timely fashion, and is shared securely.
7. **Keep a record** of your decision and the reasons for it – whether it is to share information or not. If you decide to share, then record what you have shared, with whom and for what purpose.

*Taken from [Information Sharing: advice for practitioners providing safeguarding services to children, young people, parents and carers \(2018\)](#) HM Government*

